

New



Series NMV

Electronic timers suitable for use in industrial automation, commercial and residential applications

The new electronic timers series NMV, are particularly suitable to be employed in all industrial fields, as well as residential and commercial applications.

- Standard 22.5 mm width modules cover the complete range.
- Mounting: DIN-rail or base mounting (with screws).
Cost saving ease of installation.
- Improved timing accuracy.
Time bands up to 100 hours duration.
Selectable for star-delta commutation times of 50 ms or 100 ms.
- Time delay adjustment by means of a potentiometer enabling quick and accurate adjustment.
- LED status indication.
Confirms supply availability and contact operational condition.
- All devices have 1 or 2 changeover contacts and a thermal current of 6A (Ith).



GE imagination at work

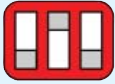
Series NMV

Time setting

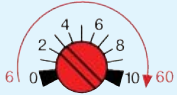
The DIP switches on the front of the device are to select the appropriate time range for the application.
The function of the DIP switch is indicated in the product instruction sheet supplied with the device.

Example

Adjust the time setting dial on the front of the timer to the required time.
In this example, 0 to 6 seconds and 10 to 60 seconds.



Range: 6 - 60 seconds



0 to 6 seconds
10 to 60 seconds

Identification



Indication and diagnostic LED. Status indication of the contact and of the power supply.

Timing range up to 100 hours.
For start-delta timer selectable changeover time at 50 ms or 100 ms.

Setting of the time delay is by a setting dial allowing quick and accurate adjustment.

Mounting: DIN rail or base mounting (with screws).

Order codes

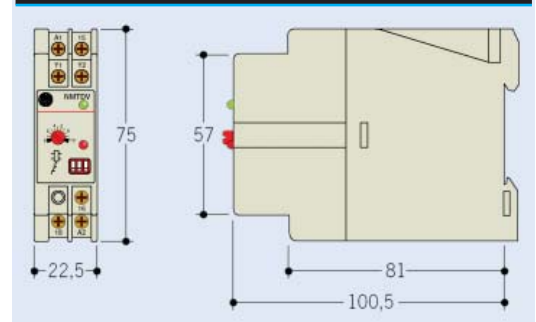
Description	Supply voltage	Time range	Contacts	Art. No.	Ref. No.
Delayed ON relay	direct 24-240V AC/DC	0.06 sec.-6000 min.	1 changeover	NMTCV	124900
	with transformer 110/125V	0.06 sec.-6000 min.	2 changeover	NMTCV2	124901
	with transformer 200/240V		1 changeover	NMTCVTAJ	124902
Delayed ON relay with instantaneous contact	with transformer 380/440V	0.06 sec.-6000 min.	1 contact timed+ 1 contact inst.	NMTCVTAM	124903
	direct 24-240V AC/DC			NMTCVTAU	124904
				NMTCIV	124905
Delayed ON relay with thyristor output timer	direct 24-240V AC/DC	0.2-500 sec.	thyristor output	NMTCSV	124906
Impulse ON timer	direct 24-240V AC/DC	0.06 sec.-6000 min.	1 changeover	NMICV	124907
Star-delta starter relay	direct 24-240V AC/DC	1-60 sec.	2 timed	NMETV	124908
	with transformer 110/125V			NMETVTAJ	124909
	with transformer 200/240V			NMETVTAM	124910
Delayed OFF timer	with transformer 380/440V	with transformer 110/125V	1 changeover	NMETVTAU	124911
		direct 24-240V AC/DC		NMRDV-6	124912
				NMRDV-60	124913
	with transformer 200/240V	50-600 sec.	2 changeover	NMRDV-600	124914
		0.5-6 sec.		NMRDV2-6	124915
		5-60 sec.		NMRDV2-60	124916
	with transformer 110/125V	50-600 sec.	1 changeover	NMRDV2-600	124917
		0.5-6 sec.		NMRDVT-6AJ	124918
		5-60 sec.		NMRDVT-60AJ	124921
	with transformer 380/440V	50-600 sec.	1 changeover	NMRDVT-600AJ	124924
		0.5-6 sec.		NMRDVT-6AM	124919
		5-60 sec.		NMRDVT-60AM	124922
Delayed OFF timer through contact timer	with transformer 380/440V	50-600 sec.	1 changeover	NMRDVT-600AM	124925
	direct 24-240V AC/DC	0.5-6 sec.		NMRDVT-6AU	124920
		5-60 sec.		NMRDVT-60AU	124923
Symmetric intermittance	direct 24-240V AC/DC	0.6 sec.-6000 min.	1 changeover	NMTDV	124927
Asymmetric intermittance started by connection	direct 24-240V AC/DC	0.6 sec.-6000 min.	1 changeover	NMIFV	124928
Multifunction or pause (selectable)	direct 24-240V AC/DC	0.06 sec.-6000 min.	1 changeover	NMIVV	124929
	with transformer 110/125V	0.06 sec.-6000 min.	1 changeover	NMMFV	124930
	with transformer 200/240V			NMMFV2AJ*	124931
	with transformer 380/440V			NMMFV3AM*	124932
	NMMFV4AU*			124933	

* Module 45 mm

GE Power Controls
International Sales
Nieuwevaart 51
B-9000 Gent - Belgium
Tel. +32/9 265 21 11
Fax +32/9 265 28 90
E-mail: gepcbel@gepc.ge.com
www.gepowercontrols.com

GE Power Controls
Hornhouse Lane
Knowsley Industrial Park
Liverpool L33 7YQ
Tel. 0870 600 4372
Fax 0151 549 4545
E-mail: gepcuk@gepc.ge.com
www.gepowercontrols.com

Dimensions



GE imagination at work
For more information, please contact:
MAJESTIC GLOBAL LTD. www.mgl.hk