

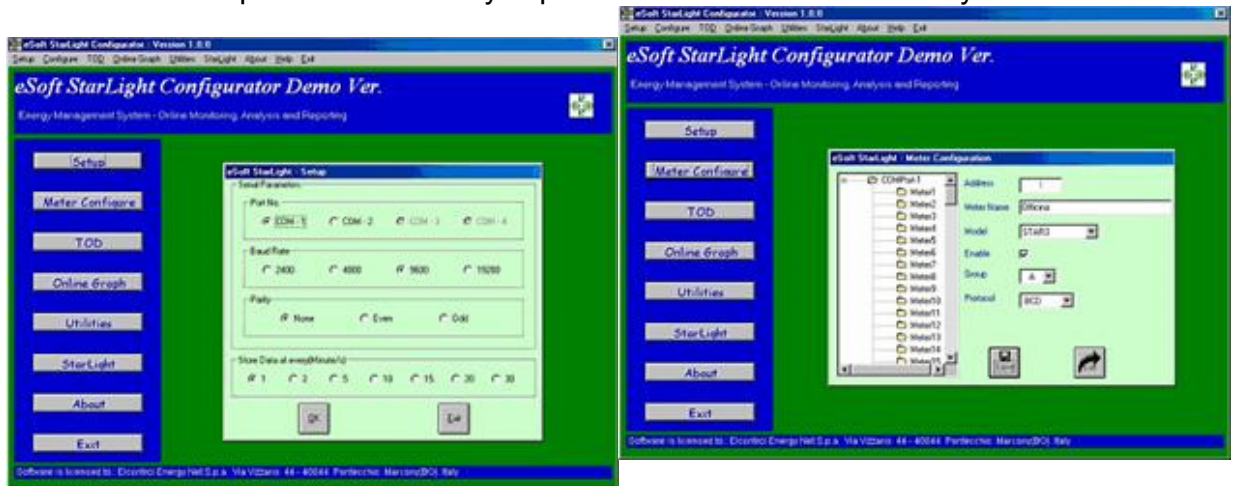
STARLIGHT

SOFTWARE FOR ENERGY MONITORING AND COST MANAGEMENT

STARLIGHT

Windows 9x, 2000 and XP software for energy consumption and costs management .

Starlight is a new cost-effective software from Elcontrol providing all the most important features needed to achieve a complete control of the costs and of the measurements related with the electrical power supply systems. It allows the data collection and management of a network of up to 128 Elcontrol analyzers. It covers the whole range of Elcontrol instruments equipped with RS485 serial port. A new powerful report tool allows to obtain a clear view of the energy consumptions over the time. Historical measures and reports can be easily exported to Excel for further analysis.

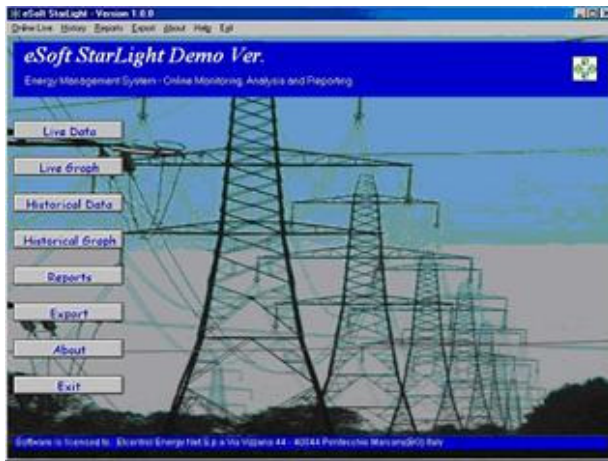


Starlight includes an interactive configurator and the runtime application. The interactive configurator provides easy and user-friendly configuration of the instrument network.

First step: select the serial port from those available on the system and the communication parameters

Second step: from a simple tree-diagram, select both the model and the desired communication protocol of the instruments, assign the preferred name to identify the load or the cost area.

Ready to go !. Configuration of the system requires only a few clicks of the mouse.



Once the configuration of the network is complete the access to the Configurator is no longer required. The runtime application Starlight is ready to be used.

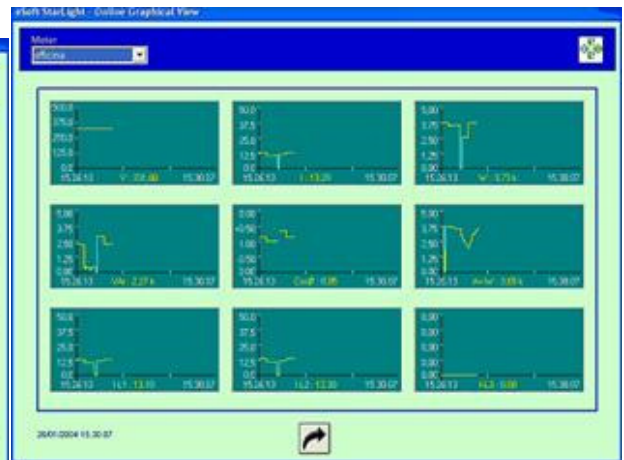
From now on any operator can safely manage the real time data without possibility to interfere with the system configuration.

An easy password mechanism increases the security level

The Live Data window displays all the real time measurement values; two different display modes are available:

- 1) An easy to read page containing all measures from a selected load. Related readings are grouped in four separate fields: 3-phase values, averages and peaks, energy counters, phase L1-L2-L3 values.

Meter	V	I	W	VAr	VA	cosφ	Air-W
1. offices	331.80	13.20	3.74k	2.27k	4.37k	0.86	3.73k
2. VIP 386	0	0	0	0	0	0	0
3.	Disabled						
4.	Disabled						
5.	Disabled						
6.	Disabled						
7.	Disabled						
8.	Disabled						



2) A spreadsheet-style table displaying simultaneously 8 instruments and their real time measures on 52 columns.

The Live Graph function displays the trend of up to 9 selected values measured from any of load.

