

General Purpose Fuses IEC

Masterfuse gG 690V



Highlights

- High ratings 1250 to 2500 A
- gG operating fuse for 690V AC Nominal
- Conformity with IEC 60269 1 and 2
- Dimensional according section V on IEC 60269-2-1
- Breaking capacity 690V 160 KA – 50Hz

Applications

- General protection on Low Voltage Panel
- High power protection on 690V AC Voltage
- Back up for circuit breaker
- Blade fuses for power bus bar assembly
- Disconnecter, Switch and/or Circuit Breaker isolation

Main characteristics

Rated current	Size (ø in mm)	Melting I ² t (KA ² s)	Total I ² t at 690V (KA ² s)	Power losses at I _n (W)	Breaking capacity	Ref. Number	Catalog number
1250 A	76	1590	8200	78	160 KA at 690V AC	E 302753	MF 76 GG 69V 1250
1600 A	89	2500	13000	111		F 302754	MF 89 GG 69V 1600
2000 A	114	4800	25000	128		G 302755	MF 114 GG 69V 2000
2500 A	127	7000	36000	175		H 302756	MF 127 GG 69V 2500

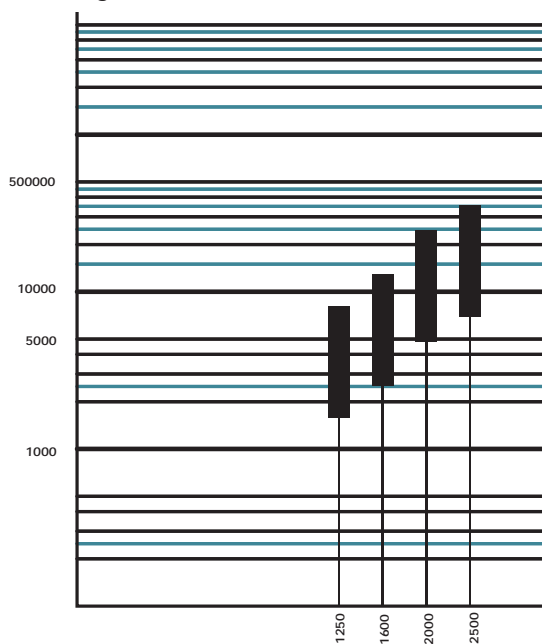
Pack: 1 piece

For ratings 3200A(Ø 146mm) – 4000A (Ø 160mm) – 4800 A (Ø 181mm) consults us

Electrical characteristics

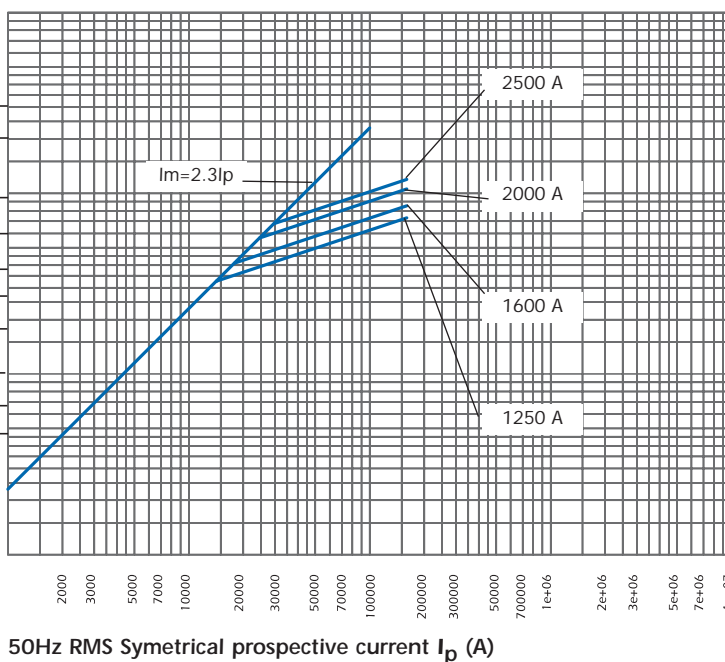
I²t vs rated current and applied voltage characteristics

Prearcing and clearing I²t(kA²s)



Peak let-thru current characteristics

Maximum peak let-thru current I_m (A)



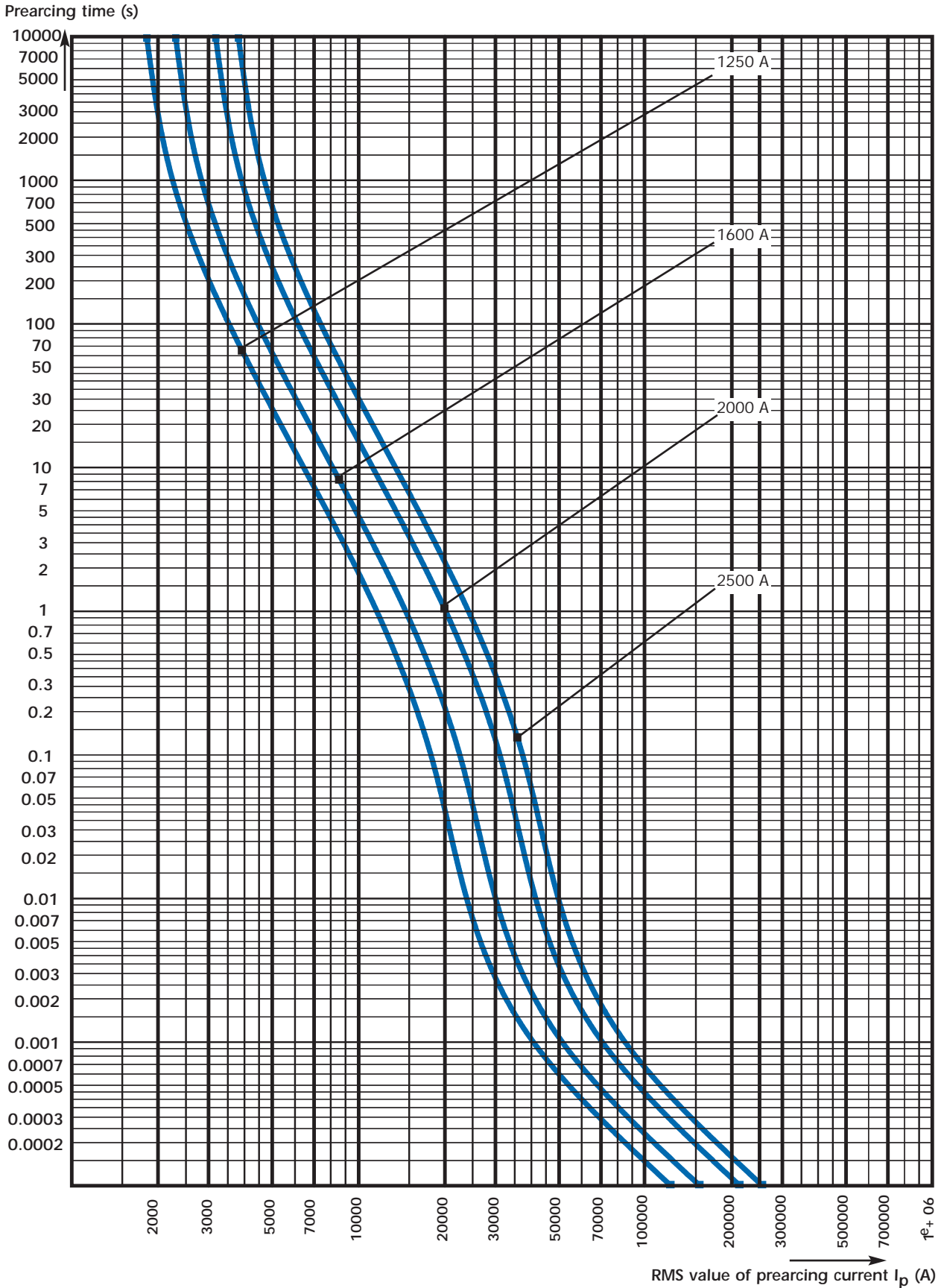
Total I²t at 690V

Melting I²t

General Purpose Fuses IEC

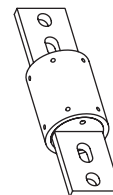
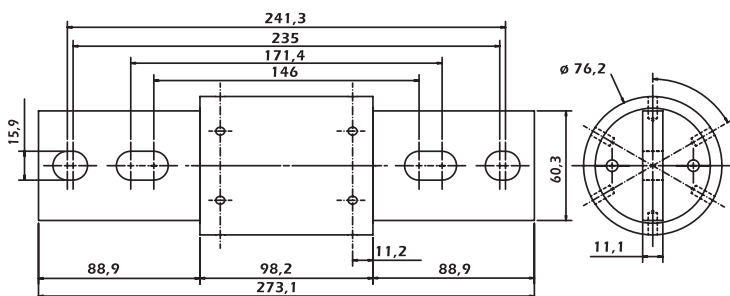
Masterfuse gG 690V

Time current characteristics

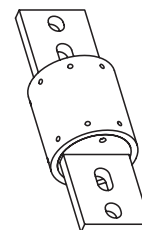
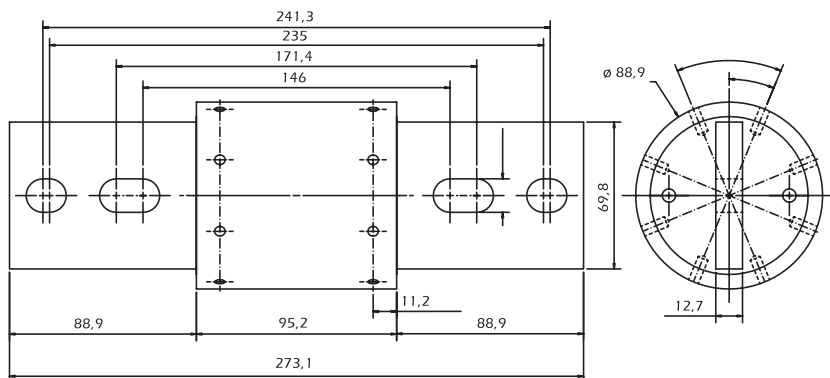


Dimensions

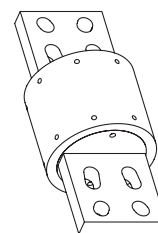
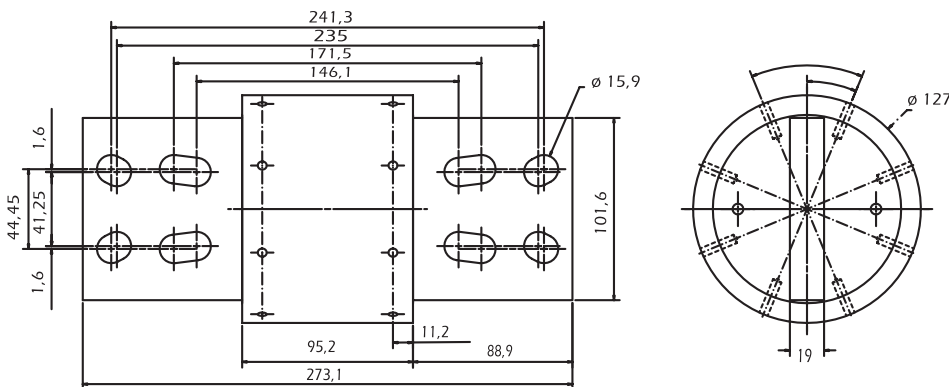
690 VgG 1250 A



690 VgG 1600 A



690 VgG 2000 A



690 VgG 2500 A

