

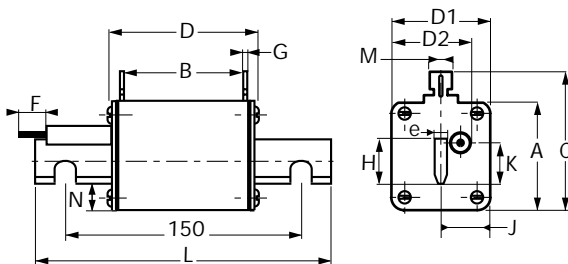
# General Purpose IEC Fuses

## NH Fuses (Plain Blades) gG Plastic body with/without French striker gG 500V Size 4

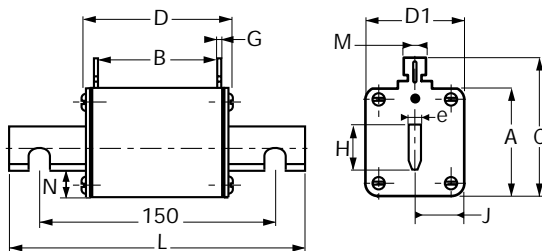


from 630 to 1250 A

- BLADE-STYLE FUSES: WITH BLOWN FUSE INDICATOR or TRIP-INDICATOR
- COMPLYING WITH IEC 269.1 and 2.1, NF EN 60269.1 & 2 NF C 63210 - 63211 AND DIN 43620
- DIMENSIONS:



With trip-indicator



With blown fuse indicator

Size	A	B	C	D	D1	D2*	F*	G	H	J	K	L	M	N	e	Wgt.
4	107	61	119	78	90	77	14	2,5	60	27	14,5	200	10	23	8	1900g

\* For fuses with trip-indicator

Size	Voltage rating (VAC)	Current rating I <sub>N</sub> (A)	Watts loss (W)	With blown fuse indicator			With trip-indicator		
				Designation	Ref. Number	Catalog Number	Designation	Ref. Number	Catalog Number
4	500	630	45	gG 4 / 630	S098318	NH4GG50V630-3	gG 4 / 630 P	G088510	NH4GG50V630-4
		800	51	gG 4 / 800	T098319	NH4GG50V800-3	gG 4 / 800 P	J088512	NH4GG50V800-4
		1000	77	gG 4 / 1000	V098320	NH4GG50V1000-3	gG 4 / 1000 P	K088513	NH4GG50V1000-4
		1250	80	gG 4 / 1250	W098321	NH4GG50V1250-3	gG 4 / 1250 P	L088514	NH4GG50V1250-4

Accessories: Neutral link - BS4 Reference Number M097715  
Pull-out handle - PMP Reference Number P215592

# General Purpose IEC Fuses

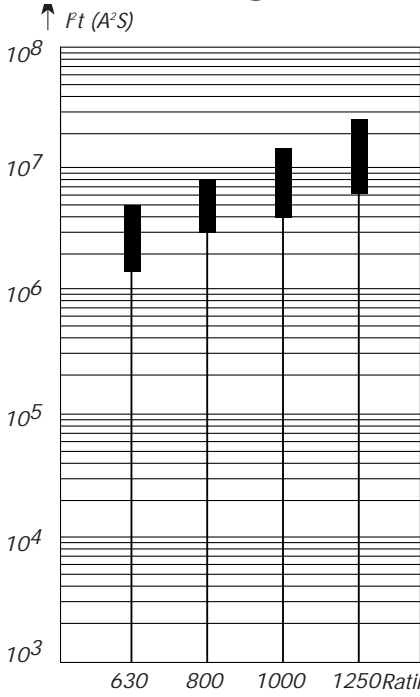


## NH Fuses (Plain Blades)

gG Plastic body with/without French striker

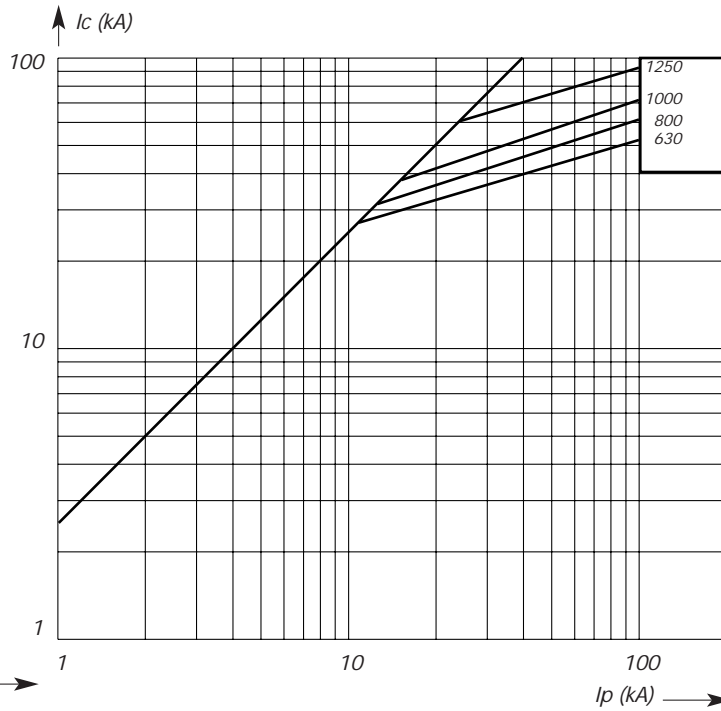
gG 500V Size 4

### from 630 to 1250 A Total Clearing I<sup>2</sup>t



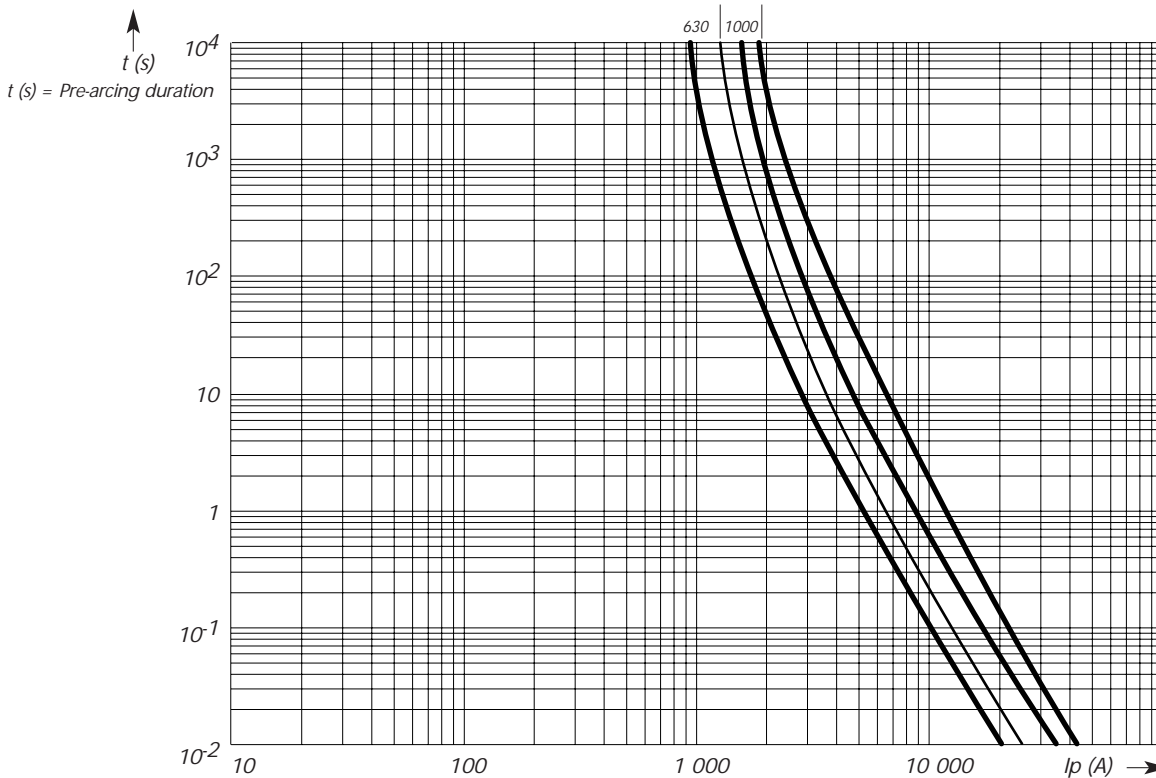
b: total clearing I<sup>2</sup>t @ 500 V  
a: pre-arcing I<sup>2</sup>t

### Current Limitation Curves



I<sub>c</sub> = Peak let-through current  
I<sub>p</sub> = Available fault current

### Time VS. Current Characteristics



Breaking capacity  
100 kA

I<sub>p</sub> (A) = R.M.S. AVAILABLE FAULT CURRENT