

# General Purpose IEC Fuses

## NH Fuses (Plain Blades) gG Ceramic body with French striker gG 690V Size 0 to 3



H216690



R223000



X214656

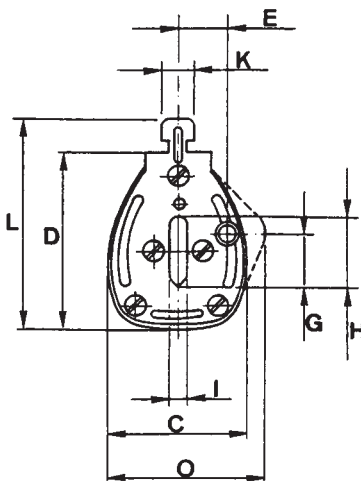
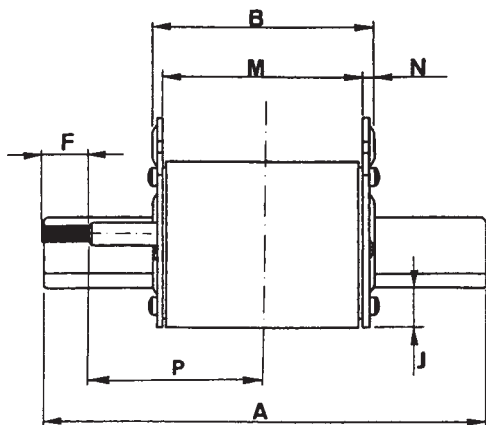


N219271

gG 500 - 690VAC

Size	Rated current $I_N$ (A)	Rated voltage (V)	Previous ref.	Ref.-no.	Breaking capacity	Catalog Number
0	32	690V	36443	P213637	80kA - 690V	NH0GG69V32P-2
0	35	690V	36445	S214146	80kA - 690V	NH0GG69V35P-2
0	40	690V	36447	W214655	80kA - 690V	NH0GG69V40P-2
0	50	690V	36451	B215166	80kA - 690V	NH0GG69V50P-2
0	63	690V	36455	D215674	80kA - 690V	NH0GG69V63P-2
0	80	690V	36459	J216185	80kA - 690V	NH0GG69V80P-2
0	100	690V	36463	H216690	80kA - 690V	NH0GG69V100P-2
0	125	500V	36465	V217207	120kA - 500V	NH0GG50V125P-2
0	160	500V	36469	A217718	120kA - 500V	NH0GG50V160P-2
0	200	500V	36471	K218233	120kA - 500V	NH0GG50V200P-2
1	80	690V	36559	Y218751	80kA - 690V	NH1GG69V80P-2
1	100	690V	36563	M219270	80kA - 690V	NH1GG69V100P-2
1	125	690V	36565	P219801	80kA - 690V	NH1GG69V125P-2
1	160	690V	36569	Z222478	80kA - 690V	NH1GG69V160P-2
1	200	690V	36571	R223000	80kA - 690V	NH1GG69V200P-2
1	224	500V	36573	Y200788	120kA - 500V	NH1GG50V224P-2
1	250	500V	36575	Q201333	120kA - 500V	NH1GG50V250P-2
1	315	500V	36579	Z201847	120kA - 500V	NH1GG50V315P-2
1	355	500V	36581	W211067	120kA - 500V	NH1GG50V355P-2
2	125	690V	36665	W212102	80kA - 690V	NH2GG69V125P-2
2	160	690V	36669	L212622	80kA - 690V	NH2GG69V160P-2
2	200	690V	36671	Y213139	80kA - 690V	NH2GG69V200P-2
2	224	690V	36673	Q213638	80kA - 690V	NH2GG69V224P-2
2	250	690V	36675	T214147	80kA - 690V	NH2GG69V250P-2
2	315	690V	36679	X214656	80kA - 690V	NH2GG69V315P-2
2	355	500V	36681	E215675	120kA - 500V	NH2GG69V355P-2
2	400	500V	36683	K216186	120kA - 500V	NH2GG50V400P-2
2	500	500V	36687	W217208	120kA - 500V	NH2GG50V500P-2
3	315	690V	36779	B217719	80kA - 690V	NH3GG69V315P-2
3	355	690V	36781	L218234	80kA - 690V	NH3GG69V355P-2
3	400	690V	36783	Z218752	80kA - 690V	NH3GG69V400P-2
3	500	690V	36787	N219271	80kA - 690V	NH3GG69V500P-2
3	630	500V	36789	Q219802	120kA - 500V	NH3GG50V630P-2

Pack. : 3 pieces



### Dimensions

	0	1	2	3
A	124.5	134.5	150	150
B	66	67	67	67
C	39	40	56	69
D	49	55	62.5	76
E	14.5	16	19	24
F	15.5	15.5	15.5	15.5
G	14	14.5	14.5	14.5
H	15	20	26	32
I	6	6	6	6
J	14	14	15	16
K	10	10	10	10
L	59	65	72.5	86
M	60	61	61	61
N	3	3	3	3
O	41.5	45	-	-
P	47	52	60	60

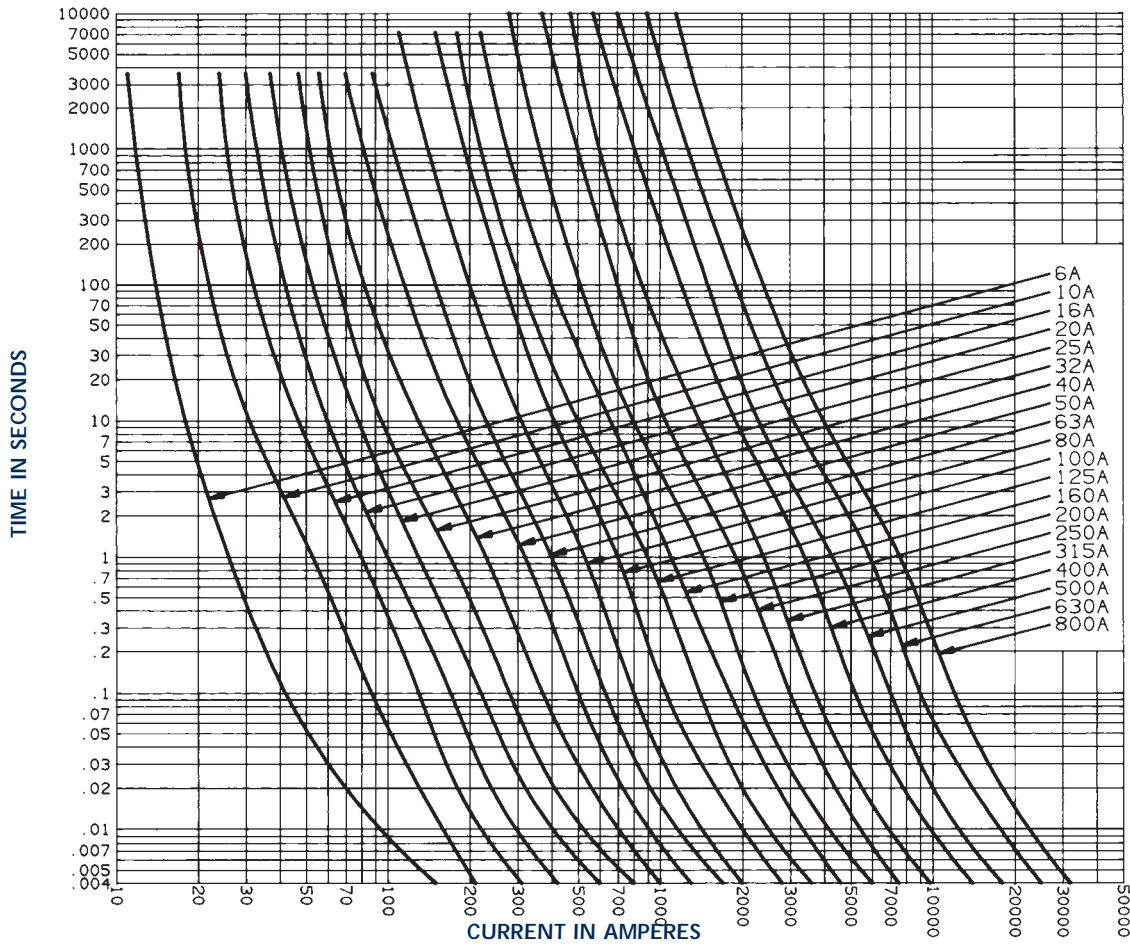
# General Purpose IEC Fuses



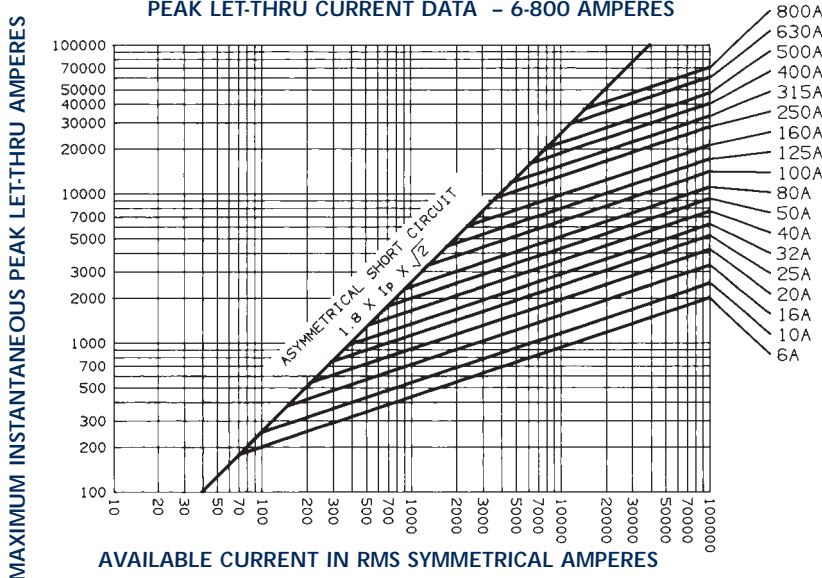
NH Fuses (Plain Blades)  
 gG Ceramic body with French striker  
 gG 690V Size 0 to 3

gG 500 - 690VAC

MELTING TIME - CURRENT DATA - 6-800 AMPERES



PEAK LET-THRU CURRENT DATA - 6-800 AMPERES



Striker



# General Purpose IEC Fuses

NH Fuses (Plain Blades)  
gG Ceramic body with French striker  
gG 690V Size 0 to 3



gG 500 - 690VAC

## Power Loss (Watts) at Rated Current

Rated current $I_N$ (A)	Size			
	0	1	2	3
32	3.7 W			
35	4.0 W			
40	4.5 W			
50	5.2 W			
63	6.2 W			
80	7.5 W	6.9 W		
100	8.5 W	8.1 W		
125	10.7 W	9.6 W	9.5 W	
160	13.5 W	11.9 W	11.5 W	
200	15.0 W	14.9 W	14.5 W	
224		16.7 W	16.0 W	
250		18.7 W	17.5 W	
315		25.0 W	23.0 W	23 W
355		28.0 W	25.0 W	25 W
400			29.0 W	29 W
425			34.0 W	34 W
500			39.0 W	39 W
630				47 W
800				67 W

## Typical values allowed by the standards

Rated current $I_N$ (A)	Size			
	0 160A	1 250A	2 400A	3 630A
VDE 0660 (500V)	25 W	32 W	45 W	60 W
IEC 269-2-1 (660V)	25 W	32 W	45 W	60 W
UNE 21103 (500V)	25 W	32 W	45 W	60 W
NFC 63210 (500V)	25 W	32 W	45 W	60 W
VDE 0636 (660V)	-	23 W	34 W	48 W
VDE 0636 (500V)	16 W	23 W	34 W	48 W
IEC 269 (500V)	16 W	23 W	34 W	48 W
UNESA (500V)	17 W	26 W	32 W	48 W
WDE W (500V)	16 W	21 W	32 W	42 W

# General Purpose IEC Fuses



NH Fuses (Plain Blades)  
 gG Ceramic body with French striker  
 gG 690V Size 0 to 3

gG 500 - 690VAC

I<sup>2</sup>T CHARACTERISTICS - DISCRIMINATION

