

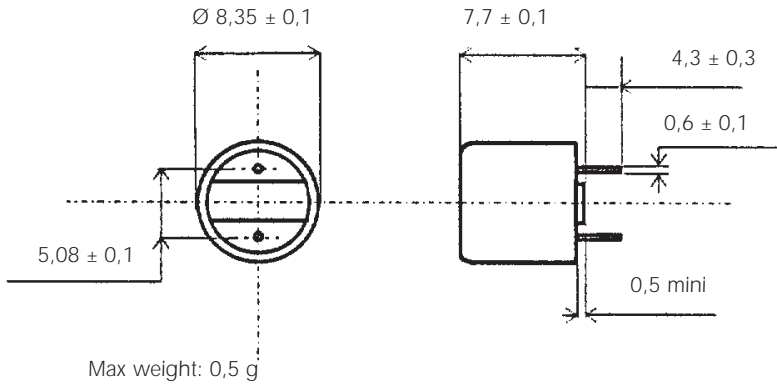
Miniature Fuses

IEC Fuses Subminiature MRF Fast Acting

Complying with IEC-127-3 Standard Sheet 3

250 VAC
FROM 0,050 TO 6,3 A

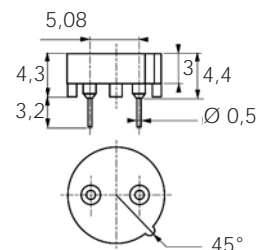
Dimensions



Basic Characteristics

| Size | Rated Voltage | Rated Current | Breaking Capacity under 250 VAC | Max. power dissip | Max. Voltage drop | Désignation | Reference Number | Catalog Number |
|---------------------|---------------|---------------|---------------------------------|-------------------|-------------------|------------------|------------------|----------------|
| mm | VAC | A | A | W | V | | | |
| Ø8,35 x h=7,7 | 250 | 0,050 | 35 | 0,08 | 0,72 | 250V MRF 0,05 A | K 085 385 | MIMRF25V0,05 |
| | | 0,063 | | 0,09 | 0,65 | 250V MRF 0,063 A | L 085 386 | MIMRF25V0,063 |
| | | 0,080 | | 0,11 | 0,58 | 250V MRF 0,08 A | M 085 387 | MIMRF25V0,08 |
| | | 0,100 | | 0,12 | 0,52 | 250V MRF 0,1 A | N 085 388 | MIMRF25V0,1 |
| | | 0,125 | | 0,14 | 0,47 | 250V MRF 0,125 A | P 085 389 | MIMRF25V0,125 |
| | | 0,160 | | 0,10 | 0,27 | 250V MRF 0,16 A | Q 085 390 | MIMRF25V0,16 |
| | | 0,200 | | 0,12 | 0,26 | 250V MRF 0,2 A | R 085 391 | MIMRF25V0,2 |
| | | 0,250 | | 0,15 | 0,254 | 250V MRF 0,250 A | S 085 392 | MIMRF25V0,25 |
| | | 0,315 | | 0,18 | 0,246 | 250V MRF 0,315 A | T 085 393 | MIMRF25V0,315 |
| | | 0,400 | | 0,22 | 0,239 | 250V MRF 0,400 A | V 085 394 | MIMRF25V0,4 |
| | | 0,500 | | 0,27 | 0,232 | 250V MRF 0,500 A | X 085 396 | MIMRF25V0,5 |
| | | 0,630 | | 0,15 | 0,106 | 250V MRF 0,630 A | Y 085 397 | MIMRF25V0,63 |
| | | 0,800 | | 0,19 | 0,103 | 250V MRF 0,800 A | Z 085 398 | MIMRF25V0,8 |
| | | 1,000 | | 0,23 | 0,1 | 250V MRF 1 A | A 085 399 | MIMRF25V1 |
| | | 1,250 | | 0,28 | 0,097 | 250V MRF 1,25 A | B 085 400 | MIMRF25V1,25 |
| | | 1,600 | | 0,35 | 0,094 | 250V MRF 1,6 A | C 085 401 | MIMRF25V1,6 |
| | | 2,000 | | 0,42 | 0,091 | 250V MRF 2 A | D 085 402 | MIMRF25V2 |
| | | 2,500 | | 0,51 | 0,088 | 250V MRF 2,5 A | E 085 403 | MIMRF25V2,5 |
| | | 3,150 | | 0,62 | 0,086 | 250V MRF 3,15 A | F 085 404 | MIMRF25V3,15 |
| | | 4,000 | | 40 | 0,77 | 0,083 | 250V MRF 4 A | G 085 405 |
| 5,000 | | 50 | 0,93 | 0,081 | 250V MRF 5 A | R 208 625 | MIMRF25V5 | |
| 6,300* | | 63 | 1,14 | 0,078 | 250V MRF 6,3 A | S 208 626 | MIMRF25V6,3 | |

* Non approval rating



Reference Number:
G210548
Catalog number MISIMRT/MRF

Miniature Fuses

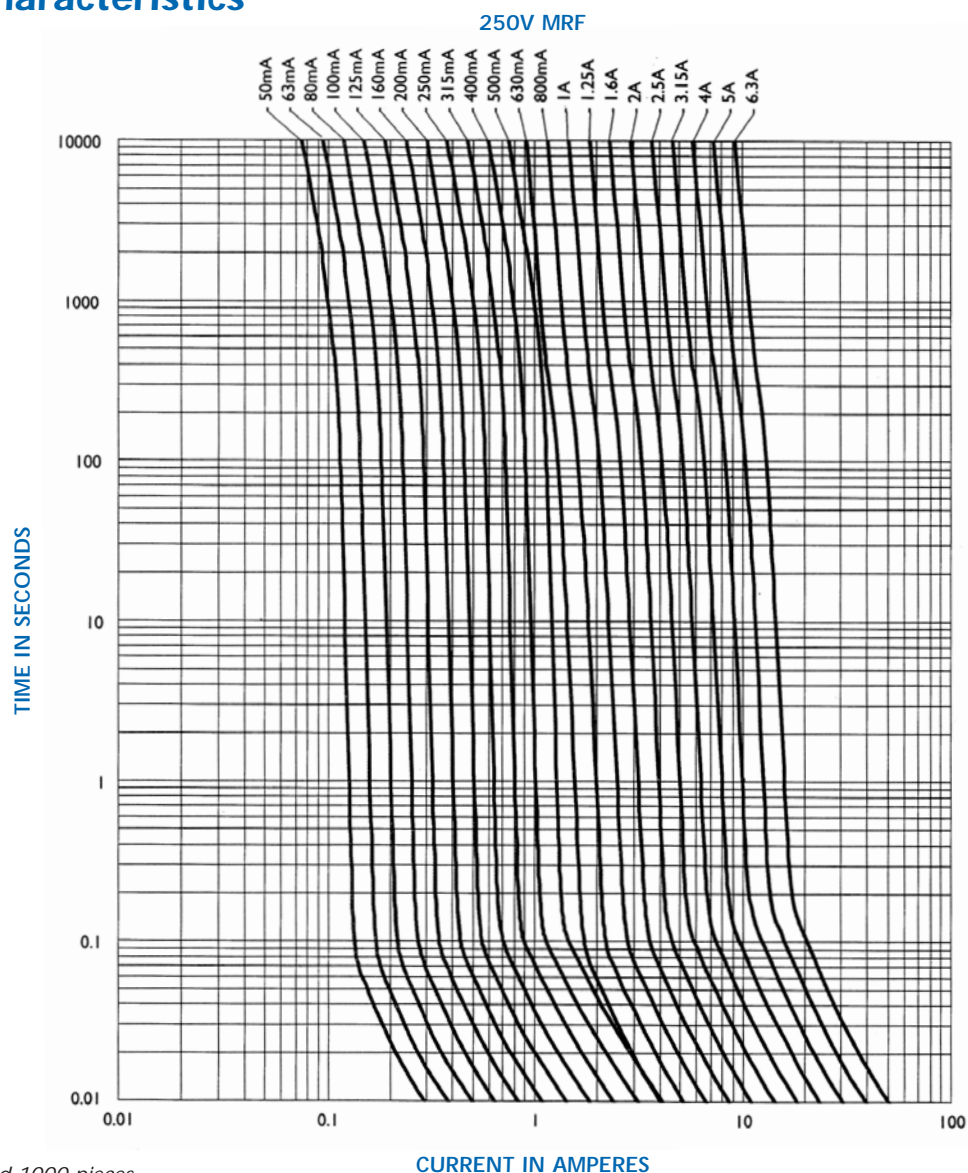
IEC Fuses Subminiature MRF Fast Acting



Melting time limits

| Current | 210 % x I _n | 275 % x I _n | | 400 % x I _n | | 1 000 % x I _n |
|---------------|------------------------|------------------------|----------|------------------------|-------------|--------------------------|
| 50 mA → 6,3 A | 30 min maxi | 10 ms mini | 3 s maxi | 3 ms mini | 300 ms maxi | 20 ms maxi |

Time-current characteristics



Packaging: in box of 100 and 1000 pieces

Installation instructions

- Soldering heat resistance as per IEC 68-2-20: 260°C for 10 seconds.
- Material:
 - Body: Thermoplastic V0 UL 94.
 - Connection: Tin-plated copper alloy.
- Operating temperature: -55°C to 125°C.