

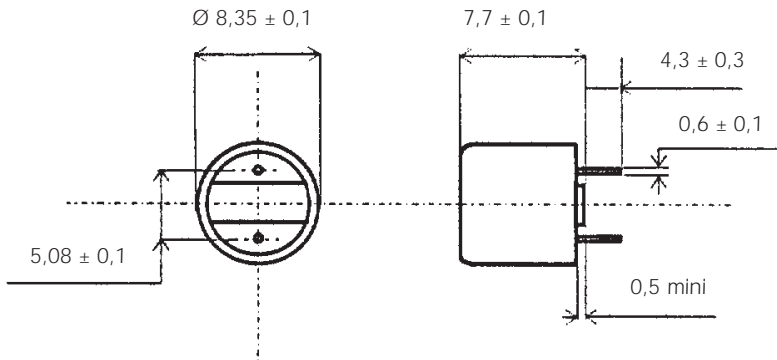
# Miniature Fuses

## IEC Fuses Subminiature MRT Time Lag

Complying with IEC-127-3 Standard Sheet 4

**250 VAC**  
**FROM 0,080 TO 6,3 A**

### Dimensions



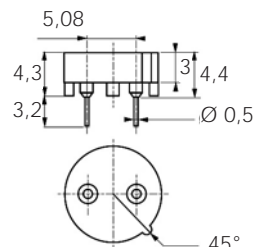
Max weight: 0.5 g

### Basic Characteristics

Size	Rated Voltage	Rated Current	Breaking Capacity under 250 VAC	Max. power dissip	Max. Voltage drop	Designation			Reference Number	Catalog Number	
mm	VAC	A	A	W	V						
Ø8,35 x h=7,7	250	0,080	35**	0,10	0,40	250V	MRT	0,080	A	C 081 767	MIMRT25V0,08
		0,100		0,11	0,35	250V	MRT	0,100	A	D 082 550	MIMRT25V0,1
		0,125		0,13	0,30	250V	MRT	0,125	A	E 082 551	MIMRT25V0,125
		0,160		0,15	0,28	250V	MRT	0,160	A	F 082 552	MIMRT25V0,16
		0,200		0,17	0,25	250V	MRT	0,200	A	G 082 553	MIMRT25V0,2
		0,250		0,19	0,22	250V	MRT	0,250	A	H 082 554	MIMRT25V0,25
		0,315		0,22	0,19	250V	MRT	0,315	A	J 082 555	MIMRT25V0,315
		0,400		0,25	0,16	250V	MRT	0,400	A	K 082 556	MIMRT25V0,4
		0,500		0,29	0,15	250V	MRT	0,500	A	L 082 557	MIMRT25V0,5
		0,630		0,33	0,13	250V	MRT	0,630	A	M 082 558	MIMRT25V0,63
		0,800		0,38	0,12	250V	MRT	0,800	A	N 082 559	MIMRT25V0,8
		1,000		0,44	0,11	250V	MRT	1	A	P 082 560	MIMRT25V1
		1,250		0,51	0,10	250V	MRT	1,25	A	O 082 561	MIMRT25V1,25
		1,600		0,58	0,095	250V	MRT	1,6	A	R 082 562	MIMRT25V1,6
		2,000		0,67	0,090	250V	MRT	2	A	S 082 563	MIMRT25V2
		2,500		0,77	0,087	250V	MRT	2,5	A	T 082 564	MIMRT25V2,5
		3,150		0,88	0,083	250V	MRT	3,15	A	V 082 565	MIMRT25V3,15
4,000*		40**	1,02	0,080	250V	MRT	4	A	W 082 566	MIMRT25V4	
5,000*		50**	1,17	0,077	250V	MRT	5	A	Z 208 632	MIMRT25V5	
6,300*		63**	1,34	0,073	250V	MRT	6,3	A	A 208 633	MIMRT25V6,3	

\* approval only.

\*\* 100A for



Reference Number:  
G210548  
Catalog number MISIMRT/MRF

# Miniature Fuses

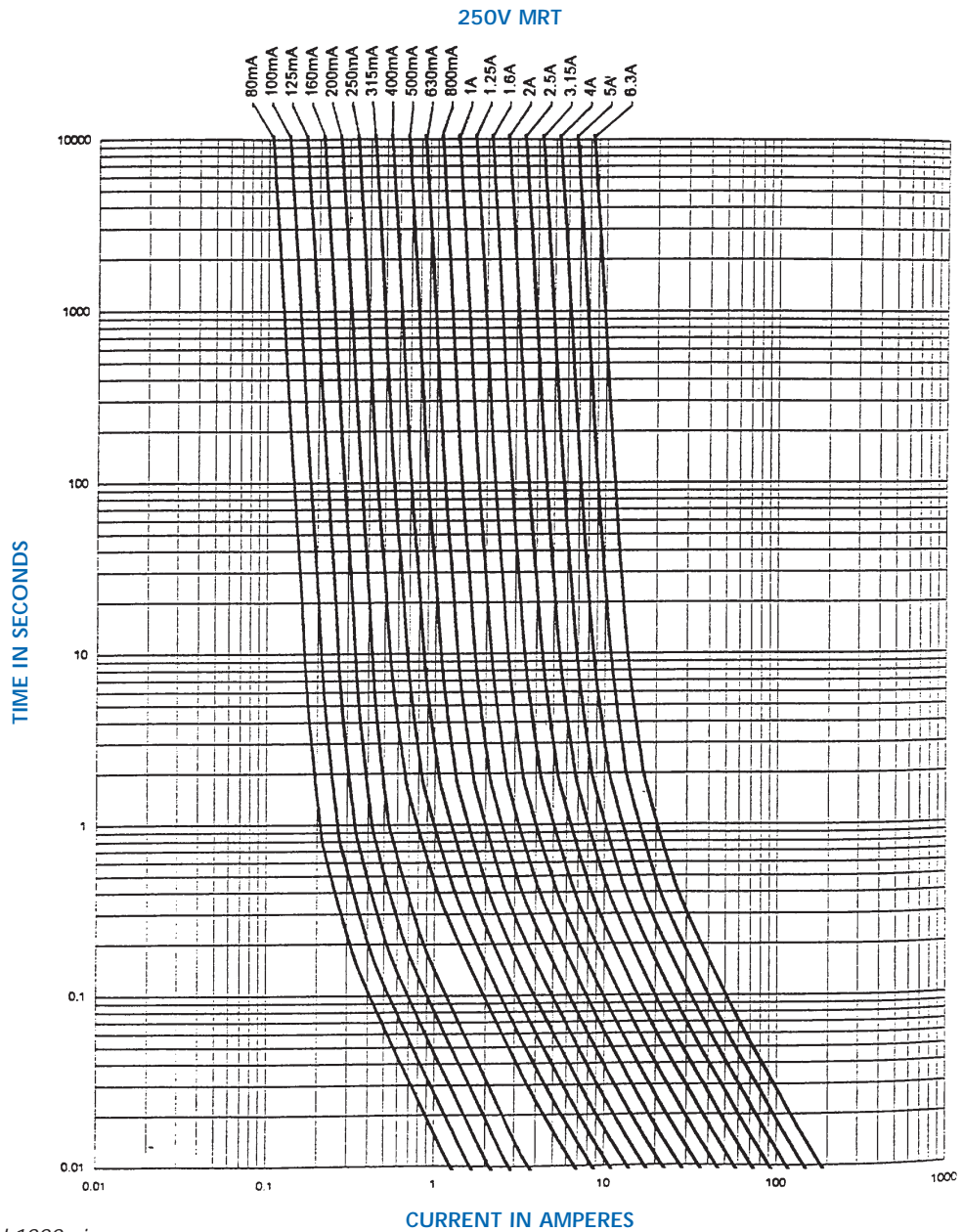
## IEC Fuses Subminiature MRT Time Lag



### Melting time limits

Current	210 % x I <sub>n</sub>	275 % x I <sub>n</sub>		400 % x I <sub>n</sub>		1 000 % x I <sub>n</sub>	
80 mA → 6,3 A	2 min maxi	400 ms mini	10 s maxi	150 ms mini	3 s maxi	20 ms mini	150 ms maxi

### Time-current characteristics



Packaging: in box of 100 and 1000 pieces.

### Installation instructions

- Soldering heat resistance as per IEC 68-2-20 260°C for 10 seconds.
- Material:
  - Body: Thermoplastic V0 UL 94.
  - Connection: Tin-plated copper alloy.
- Operating temperature: -55°C to 125°C