

## American Fuses E-Rated 5.5kV - Bolt-in Series



### 5kV Bolt-in fuses

Amp-trap Bolt-in Series E-rated fuses are single, double or triple barrel (3" diam.) with end mounts designed for bolting directly to equipment bus or terminal pads. They are UL listed and are for use indoors (or outdoors in a weatherproof enclosure). The unique time-current characteristic of Ferraz Shawmut E-rated fuses allows them to be closely sized to transformer full load rated current, as recommended by IEEE guidelines, without being affected by normal magnetizing inrush current. Bolt-in fuses are typically sized at transformer rated current of 133%, thereby providing superior overall protection.

### Features/Benefits

- **UL Listed** for compatibility with UL listed equipment
- **Bolt-in mounting** for direct connection to bus or terminals
- **Current Limiting** for superior equipment protection
- **Blown-fuse indicator** gives positive identification of open fuse
- **Non-venting** for silent operation
- **Metal Embossed Catalog Number** and manufacturing date for lasting identification

### Ratings

#### A055B

**AC:** 10E to 900E  
5500V max, 63kA I.R. Sym.

### Approvals

- UL Listed to JEEG, "Fuses Over 600 Volts"
- UL File # E143362



### Highlights

- E-Rated
- UL Listed
- Complies with ANSI C37.46

### Applications

- Protection for 5.5kV transformers or distribution systems

### Definitions

#### E-rating

E-rated fuses operate as follows:  
Over 100E - must melt in 600 seconds (10 mins.) on 220 to 264% of E (ampere) rating.  
Example - A 750E fuse must melt in 600 seconds with an applied current of 1650 to 1980 amperes.

#### General Purpose Current-Limiting Fuse

A general purpose current-limiting power fuse is one that is capable of interrupting all currents from its rated interrupting rating down to the current that causes melting of the fusible element in one hour.

# Medium voltage fuses

## American Fuses E-Rated 5.5kV - Bolt-in Series

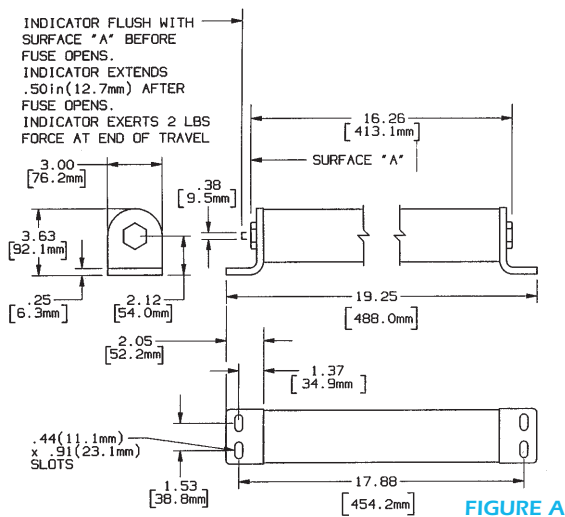


FIGURE A

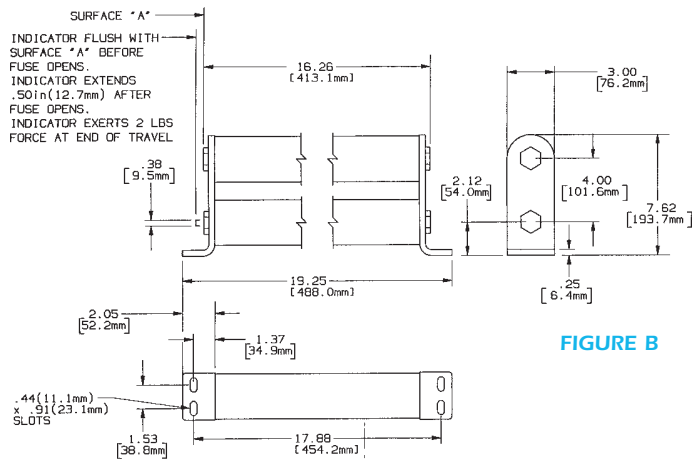


FIGURE B

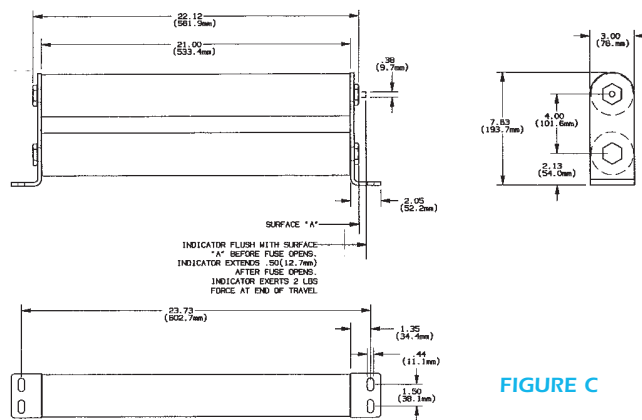
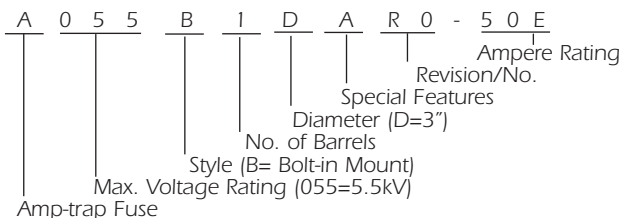


FIGURE C

### CATALOG NUMBERING SYSTEM

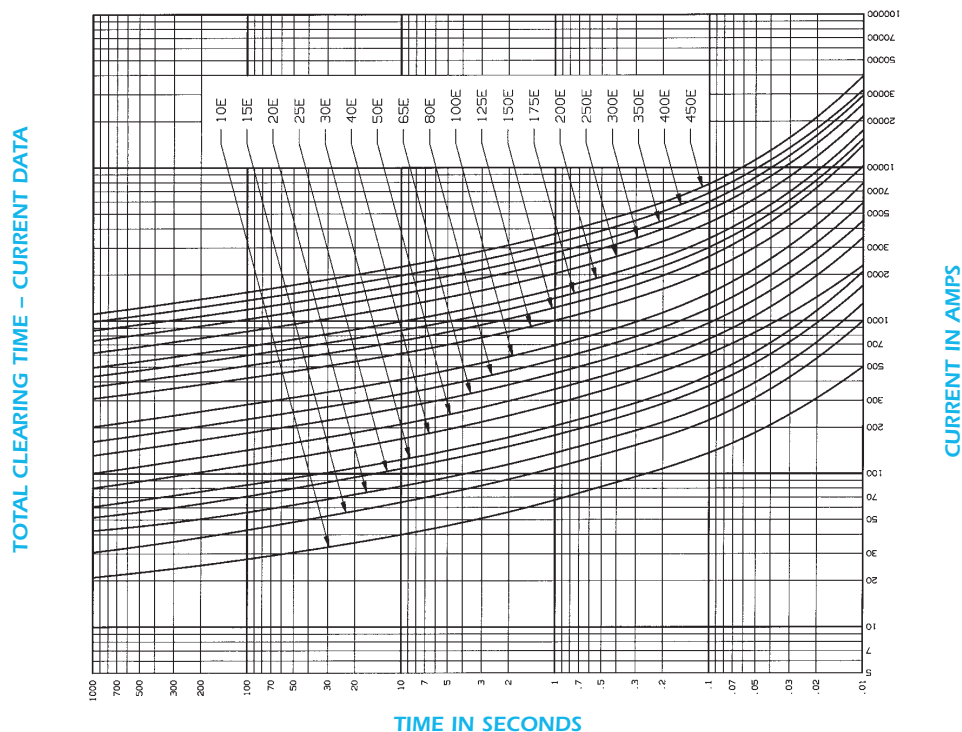


Designation	Reference Number	Ampere Rating	Number Of Barrels	Figure	Interrupting Rating RMS SYM. Amperes*
<b>5.5kV Max. - Bolt-in Style - 17.88" (454mm) Hole Centers - 3" (76.2mm) Barrel Diameter</b>					
A055B1DARO-10E		10E	1	A	
A055B1DARO-15E		15E	1	A	
A055B1DARO-20E		20E	1	A	
A055B1DARO-25E		25E	1	A	
A055B1DARO-30E		30E	1	A	
A055B1DARO-40E		40E	1	A	
A055B1DARO-50E		50E	1	A	
A055B1DARO-65E		65E	1	A	63,000
A055B1DARO-80E		80E	1	A	
A055B1DARO-100E		100E	1	A	
A055B1DARO-125E		125E	1	A	
A055B1DARO-150E		150E	1	A	
A055B1DARO-175E		175E	1	A	
A055B1DARO-200E		200E	1	A	
<b>5.5kV Max. - Bolt-in Style - 17.88" (454mm) Hole Centers - 3" (76.2mm) Barrel Diameter</b>					
A055B2DARO-250E	S221966	250E	2	B	
A055B2DARO-300E	B222710	300E	2	B	
A055B2DARO-350E	F201048	350E	2	B	63,000
A055B2DARO-400E	P201562	400E	2	B	
A055B2DARO-450E	W212332	450E	2	B	
<b>5.5kV Max. - Bolt-in Style - 23.73 (602,7mm) Hole Centers - 3" (76.2mm) Barrel Diameter</b>					
A055B2DORO-450E		450E	2	C	
A055B2DORO-500E		500E	2	C	63,000
A055B2DORO-600E		600E	2	C	

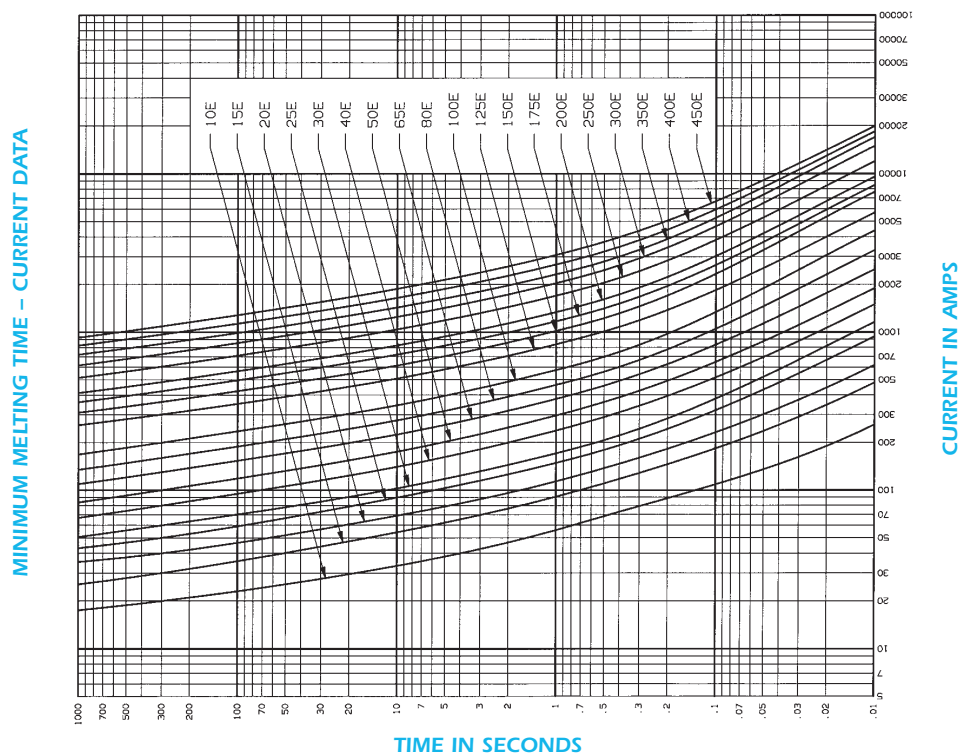
\* RMS ASYM. AMPS = RMS SYM. AMPERES x 1.6

## American Fuses E-Rated 5.5kV - Bolt-in Series

**A055B1DARO - 10E to 200E - A055B2DARO - 250E to 450E**



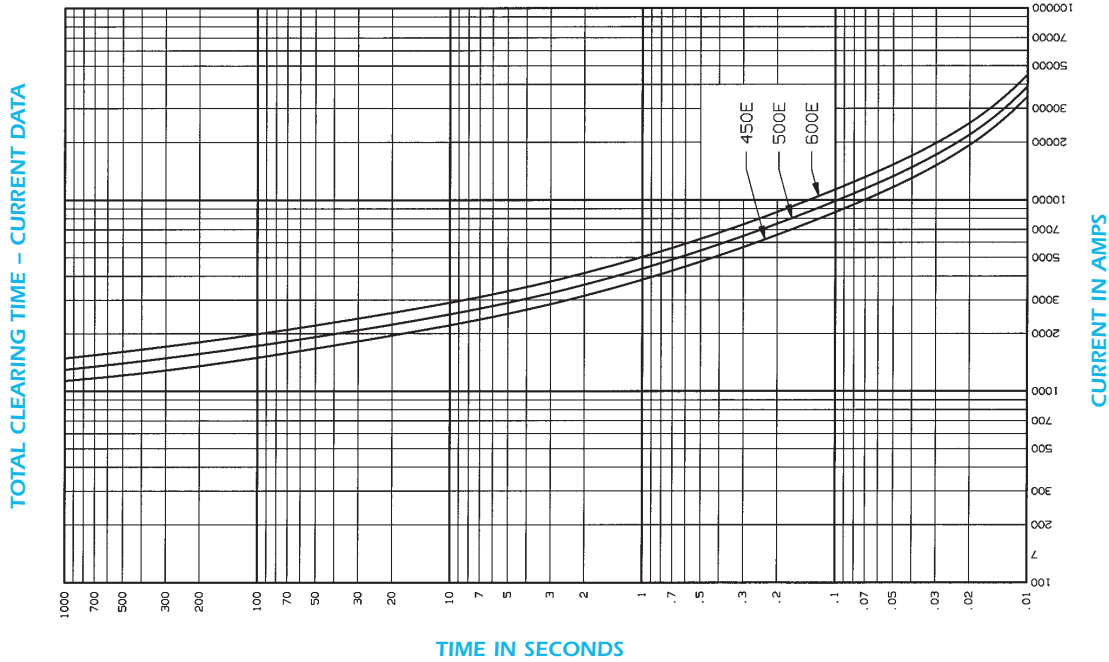
**A055B1DARO - 10E to 200E - A055B2DARO - 250E to 450E**



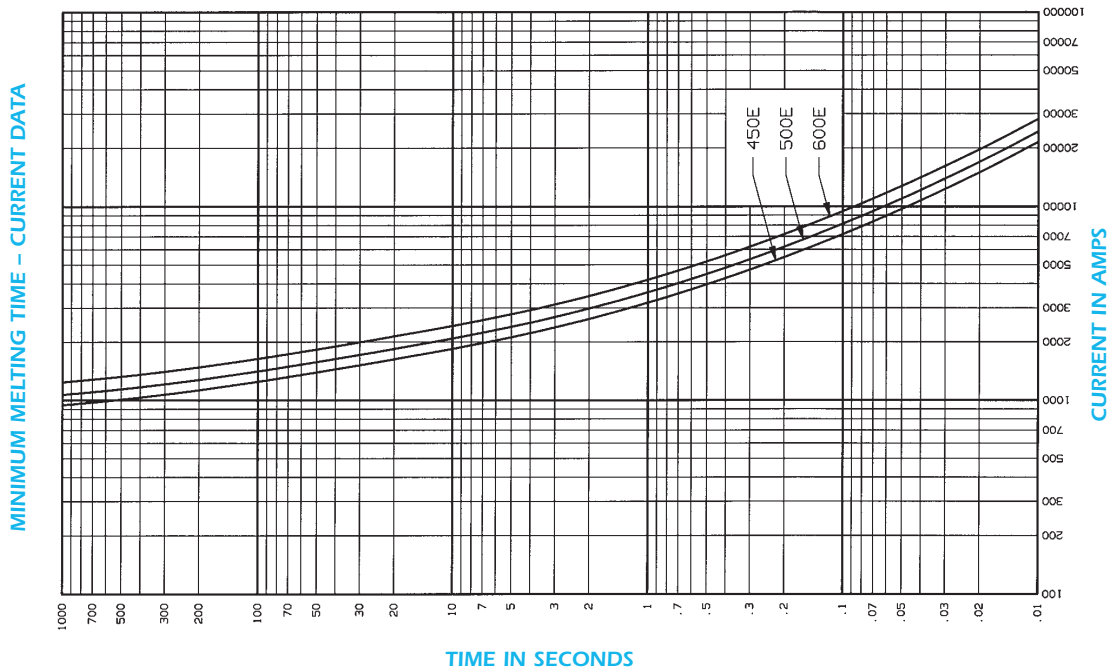
# Medium voltage fuses

## American Fuses E-Rated 5.5kV - Bolt-in Series

### A055B2D0RO - 450E to 600E

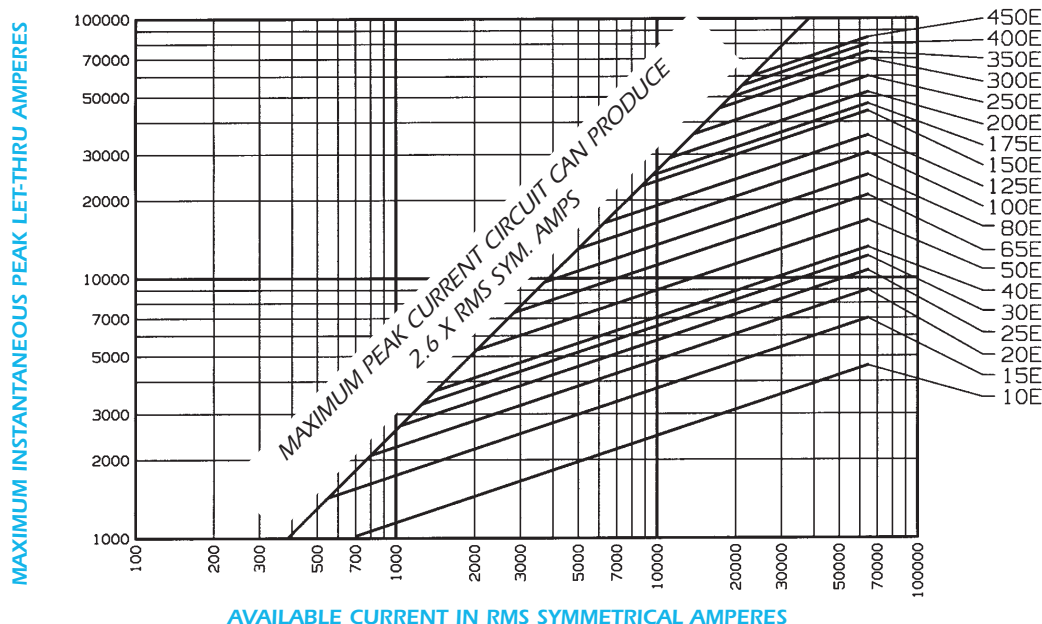


### A055B2D0RO - 450E to 600E

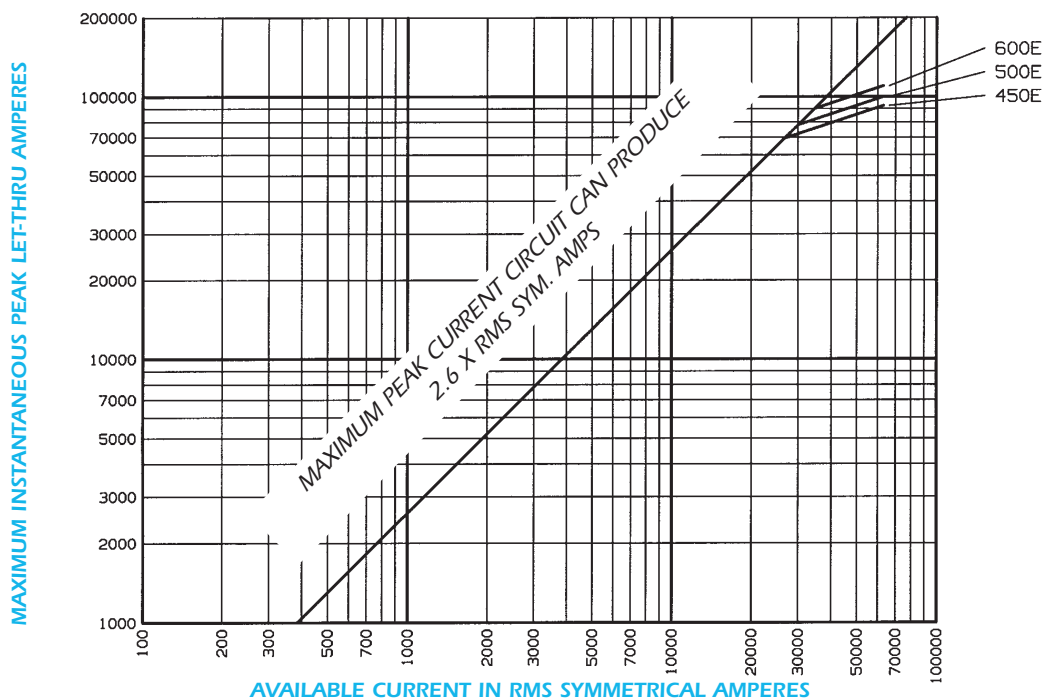


## American Fuses E-Rated 5.5kV - Bolt-in Series

### A055B1DARO - 10E to 200E - A055B2DARO - 250E to 450E Peak Let-Thru Current Data, E-Rated Fuses



### A055B2D0RO - 450E to 600E Peak Let-Thru Current Data, E-Rated Fuses

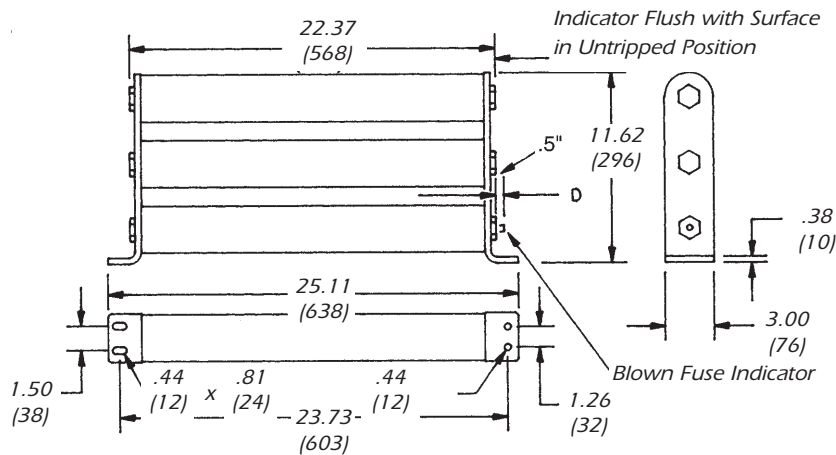
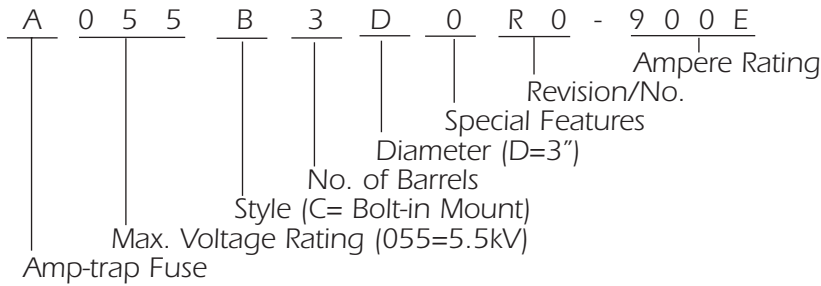


# Medium voltage fuses

## American Fuses E-Rated 5.5kV - Bolt-in Series

### 5.5kV Bolt-in

#### CATALOG NUMBERING SYSTEM



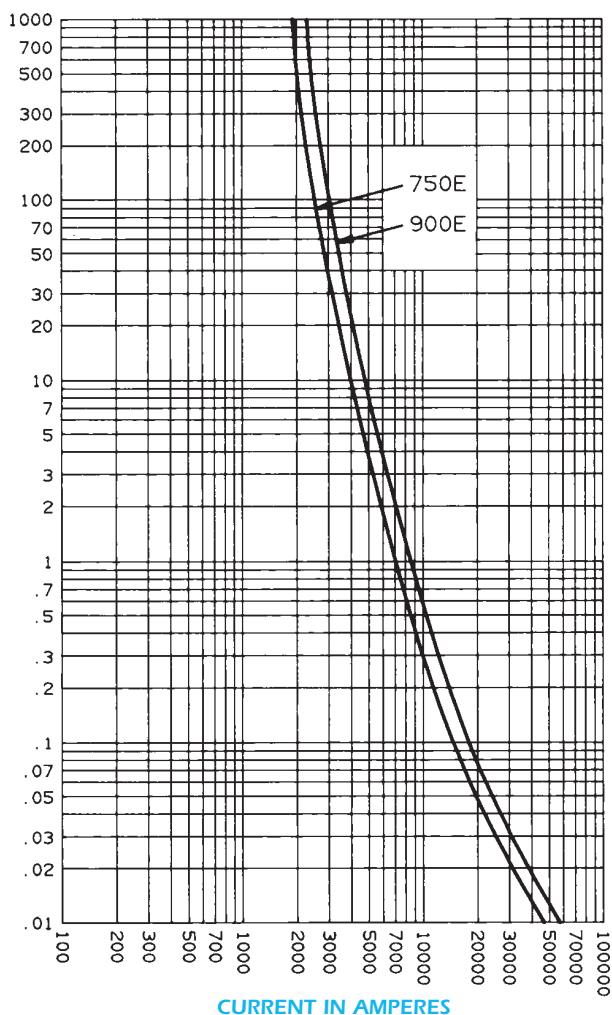
### Catalog Numbers, Ratings, Dimensions, Bolt-in Series, 5.5kV

Designation	Reference Number	Old Catalog Number	Ampere Rating	Number of Barrels	Interrupting Rating RMS SYM.* Amperes
<b>5.5kV Max. - Bolt-in Style - 23.73" (603mm) Hole Centers - 3" (76.2mm) Barrel Diameter</b>					
A055B3DORO-750E	K212851	A550X750E-4	750E	3	63,000
900E	T213365	900E-4	900E		

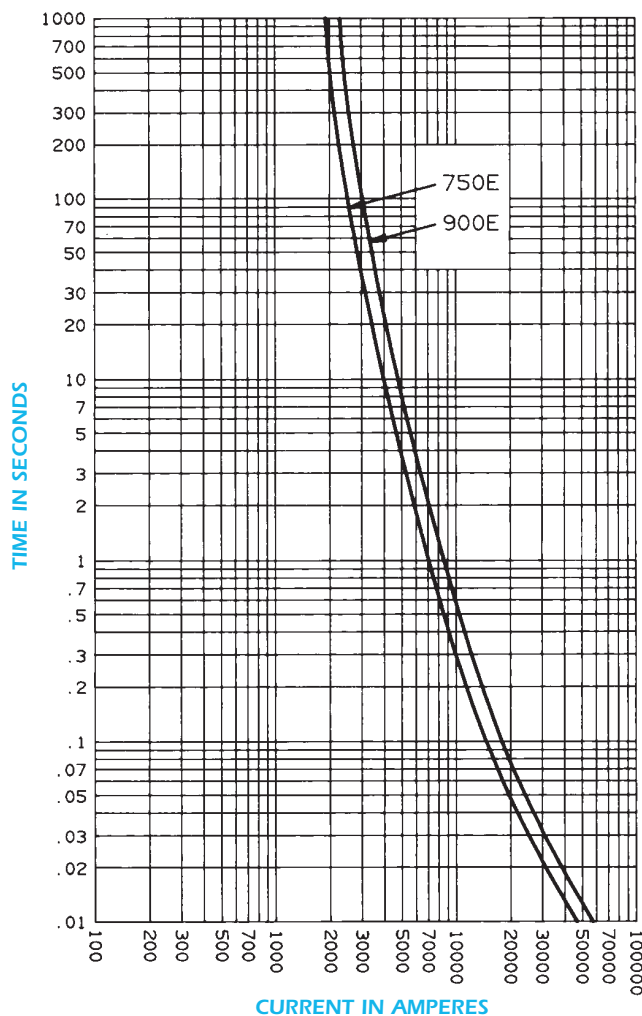
\* RMS ASYM. AMPERES = RMS SYM. AMPERES x 1.6

## American Fuses E-Rated Bolt-in Series

**A055B3DORO – 750E to 900E  
Minimum Melting Time – Current  
Data, 5.5kV Fuses**



**A055B3DORO – 750E to 900E  
Total Clearing Time – Current  
Data, 5.5kV Fuses**



**A055B3DORO – 750E to 900E**

PEAK LET-THRU CURRENT  
DATA – 5.5KV BOLT-IN FUSES

