



## Semiconductor Fuses American Round Body Fuse Blocks for Form 101 (American Round)



### P243/P266/P292

Ferraz Shawmut P243 and P266 series fuse blocks for Form 101 fuses are glass-filled polycarbonate or laminated phenolic insulator blocks with studs to accommodate bolt-in fuses. The P292 series has a laminated phenolic insulator base with fuse clips. All studs, clips and mounting hardware are tin or zinc plated.

### Ratings

- 1 to 1000A
- Clip Type: 1200VAC or less
- Stud Type: 1000VAC or less

### Approvals

- UL Recognized Component Guide IZLT2, File E52283
- CSA Certified Class 6225, File 32169

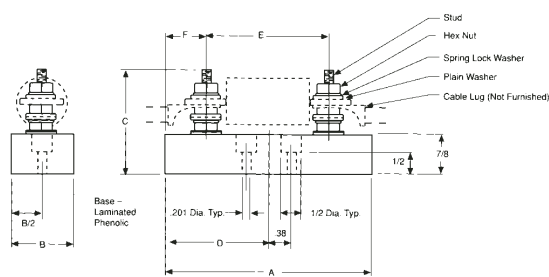


Figure 1

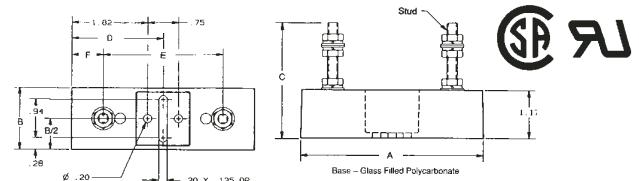


Figure 2

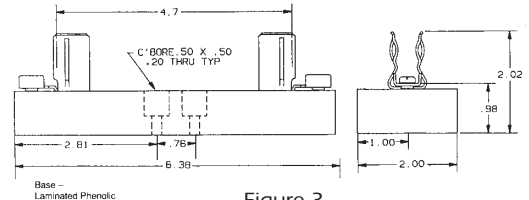


Figure 3

### Dimensions

For use with	Amps	Catalog Number	Ref. Number	FIG.	Dimensions - Inches						Stud Size	Stud Torque lb-In
					A	B	C	D	E	F		
A13X, A15QS	70-450	P243D	C219560	2	4.40	1.50	2.79	2.20	2.06	1.17	1/4-20	36
A13X, A15QS	500-600	P243G	H222762	2	4.40	1.50	2.79	2.20	2.44	0.98	5/16-18	84
A25X, A25Z, A30QS	35-60	P243G	H222762	2	4.40	1.50	2.79	2.20	2.44	0.98	5/16-18	84
A25X, A25Z, A30QS	70-200	P243	T218517	1	4.50	1.50	2.50	2.25	2.38	1.06	1/4-20	36
A25X, A25Z, A30QS	225-600	P243G	H222762	2	4.40	1.50	2.79	2.20	2.44	0.98	5/16-18	84
A50P	35-60	P243G	H222762	2	4.40	1.50	2.79	2.20	2.44	0.98	5/16-18	84
A50P, A50QS	70-200	P243E	X222016	2	4.40	1.50	2.79	2.20	2.88	0.76	1/4-20	36
A50P, A50QS	225-600	P266C	K212897	1	6.00	2.00	3.00	3.00	3.28	1.36	3/8-16	144
A60X, A60Z, A70QS	35-200	P243C	M219040	2	4.40	1.50	2.79	2.20	3.62	0.39	1/4-20	36
A60X, A60Z	225-600	P266A	Y212380	1	6.00	2.00	3.00	3.00	4.06	0.97	3/8-16	144
A70P, A70Q	35-100	P243C	M219040	2	4.40	1.50	2.79	2.20	3.62	0.39	1/4-20	36
A70P, A70Q	125-400	P266A	Y212380	1	6.00	2.00	3.00	3.00	4.06	0.97	3/8-16	144
A70P, A70Q	450-600	P266F	S213410	1	8.00	2.50	3.00	4.00	5.09	1.45	3/8-16	144
A100P	35-100	P266G	Z214428	1	6.00	2.00	2.50	3.00	4.25	0.88	1/4-20	36
A100P	125-400	P266L	J215955	1	6.00	2.00	3.00	3.00	4.66	0.67	3/8-16	144
A120X	1-30	P292	T216976	3	-	-	-	-	-	-	-	-
A30QS, A025	700-800	FH25F4	-	1	6.00	2.00	3.00	3.00	2.66	1.67	3/8-16	144
A50QS	700-800	FH50F4	-	1	8.00	2.50	3.00	4.00	4.21	1.84	1/2-13	360I
A50QS	900-1000	FH50F5	-	1	8.00	2.50	3.00	4.50	4.97	1.50	1/2-13	360
A70QS	450-600	FH70F3	-	1	8.00	2.50	3.00	4.00	5.09	1.91	1/2-13	360

Note: FH Blocks are 1" thick.  
\* Not UL or CSA Certified