



## Medium Voltage Fuses Clips



Cat. No. 228-700-520  
(Pair at bottom)

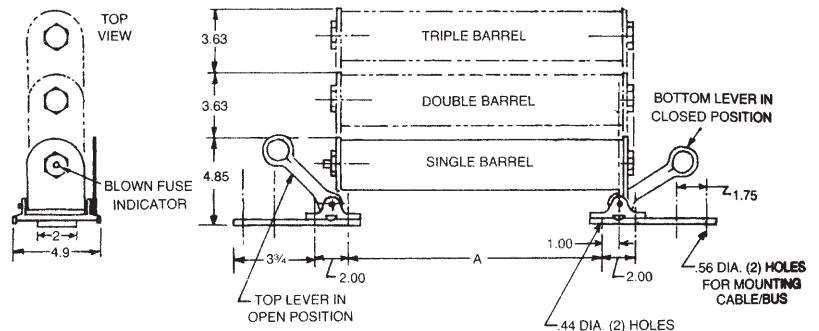
Cat. No. 228-700-530  
(Single at top)

### Clip lock design for CL-14 series

The Clip Lock design provides a reliable, high-pressure contact. Ferraz Shawmut CL-14 fuses have copper tabs which slide into position between the clip casting and cam. When the cam is locked by moving the pull ring, a high-pressure contact is made between the clip casting and fuse tab. Each clip includes two .44" diameter counter-sunk holes on 2" centers and two flat head socket screws (3/8-16 UNRC, recommended torque 200 pound-inches) for mounting the clip on standard NEMA insulators. These clips will accommodate 5kV and 15kV CL-14 fuses rated 10E to 600E. Order catalog number 228-700-520 for one pair of fuse clips, enough for one fuse.

### Mounting Details for Clip Lock Cat. No. 228-700-520

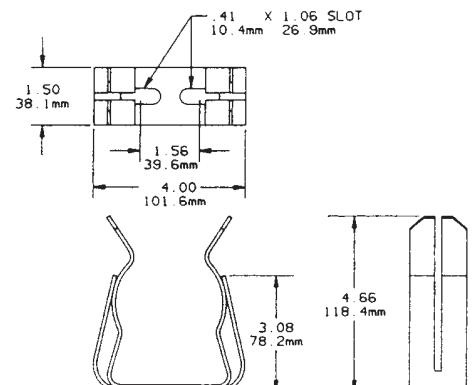
CL-14 Fuse Catalog Number	A Dimensions - Inches
A055C1DORO-(10E-150E)	13.25
A055C1DORO-(200E-400E)	19.25
A055C2DORO-(450E-600E)	19.25
A155C1DORO-(10E-50E)	19.25
A155C1DORO-(65E-100E)	19.25
A155C2DORO-(125E)	19.25
A155C3DORO-(150E-300E)	19.25



### Clips for 3" diameter ferrule fuses

These spring-reinforced clips will accommodate all 3" diameter, one and two barrel E-rated and R-rated medium voltage ferrule-type fuses. The clip and reinforcing spring are intended to be bolted to a copper bus bar through two .41" x 1.06" slots. A minimum copper-bus cross section of 1/4" x 1-1/2" is recommended for maximum fuse ratings of 24R and 450E. Catalog number is 228-700-530 for one pair of spring-reinforced clips, enough for one fuse.

Cat. No. 228-700-530





# Gears & Fuse Gears

## Medium Voltage Fuses Clips



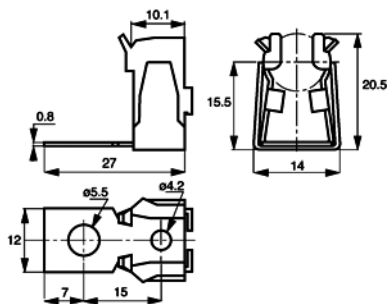
For Ferrule style Fuses  
 $\varnothing$  10 - 14 - 22 - 27 - 36 - 45 - 55

- SILVER-PLATED COPPER CLIPS: EXTREMELY HIGH THERMAL AND ELECTRIC CONDUCTIVITY
- MOUNTING TYPE:
  - SCREWING ON ISOLATORS
  - SCREWING ON BARS OR INSULATED BARS
  - WELDING ON P.C.B. (MR 10 CI)
- STAINLESS STEEL PRESSURE SPRINGS: HIGHLY RESISTANT TO SALT SPRAY

### Main Characteristics

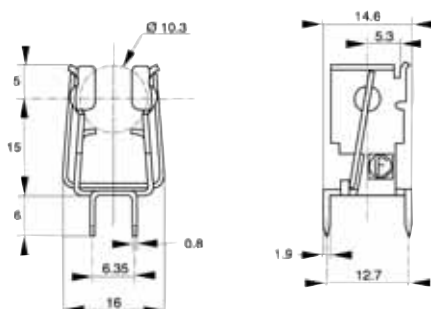
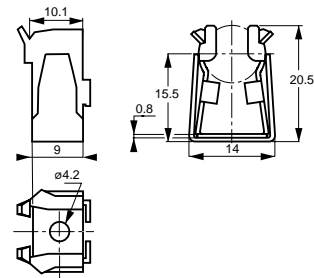
Designation	Current rating IN (A)	Maximum R.M.S continuous current through IN - rated current fuses (A)	Recommended copper cable section (mm <sup>2</sup> )
MR 10	32	32	4
MR 10 CI	32	32	4
MR 14	63	63	10
MR 20	125	125	35
MR 22	135	135	35
MR 27	250	250	120
MR 36	250	250	120
MR45	525	525	-
MR55	750	750	-

### MR 10 - MR 10 CI



Catalog Number	Designation	Ref. Number	Weight (g)	Packaging
MR10RESSORT	MR 10	B098004	7	20 pieces

Catalog Number	Designation	Ref. Number	Weight (g)	Packaging
MR10RESSORTSP	MR 10 without connection	C098994	5,7	20 pieces



Catalog Number	Designation	Ref. Number	Weight (g)	Packaging
MR10RESSORTCI	MR 10 CI	Y098507	4,5	200 pieces



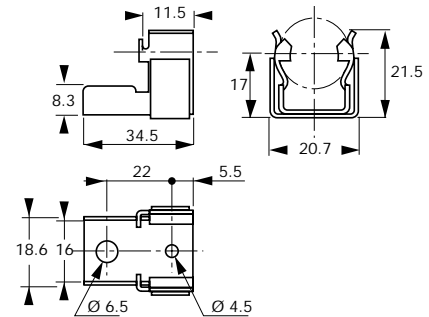
## Medium Voltage Fuses Clips



For Ferrule style Fuses  
 $\varnothing$  10 - 14 - 22 - 27 - 36 - 45 - 55

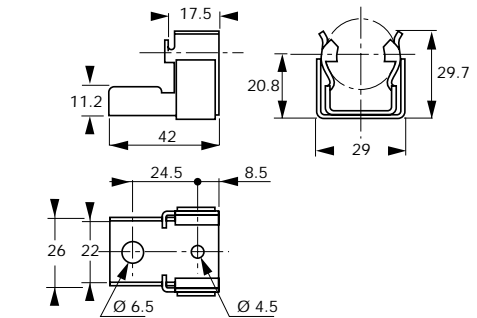
### MR 14

Catalog Number	Designation	Ref. Number	Weight (g)	Packaging
MR14SPRING	MR 14	G098170	16	10 pieces



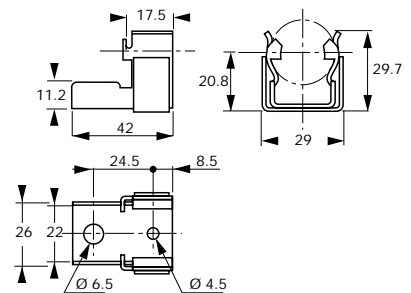
### MR 20.6

Catalog Number	Designation	Ref. Number	Weight (g)	Packaging
MR20RESSORT	MR 20.6	H099988	40	20 pieces



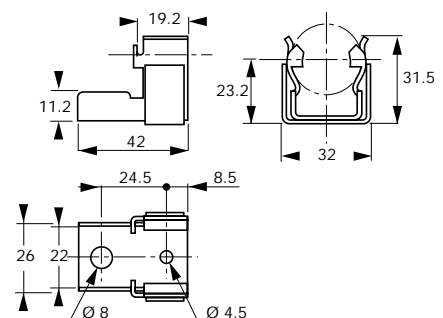
### MR 22

Catalog Number	Designation	Ref. Number	Weight (g)	Packaging
MR22SPRING	MR 22	K098909	40	10 pieces



### MR 27

Catalog Number	Designation	Ref. Number	Weight (g)	Packaging
MR27RESSORT	MR 27	Y092734	50	20 pieces



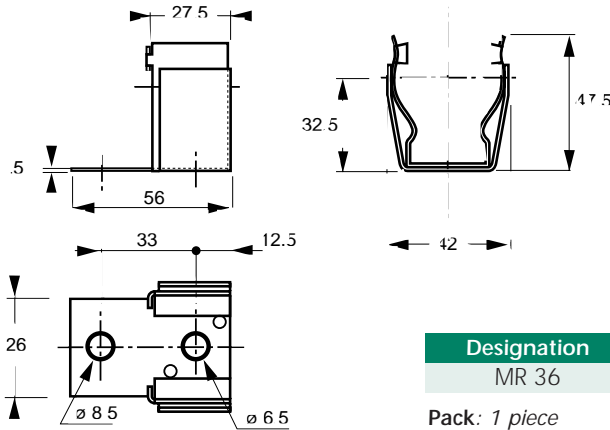


## Medium Voltage Fuses Clips



### MR 36

For Ferrule style Fuses  
 $\varnothing$  10 - 14 - 22 - 27 - 36 - 45 - 55



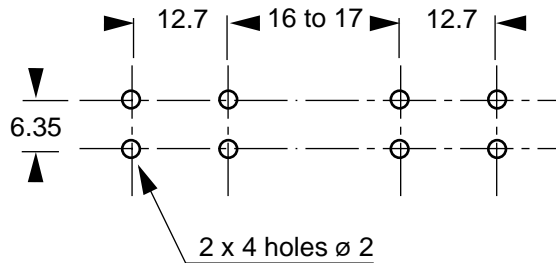
Designation	Ref. Number	Weight (g)	Catalog Number
MR 36	M091275	85	MR36R

Pack: 1 piece

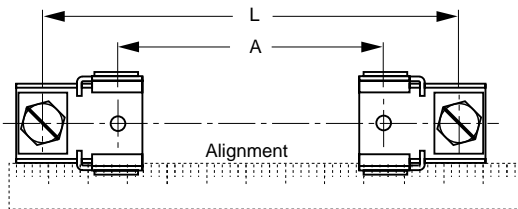
All clips silver-plated copper with stainless steel springs.

### Mounting Instructions

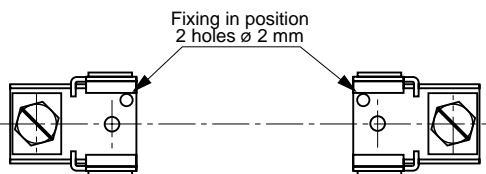
#### P.C.B. Drilling for MR10 CI clip (10 X 38 Size Fuse)



### Clip Mounting



Fuse size	A	L
10 x 38	31	61
14 x 51	42	86
22 x 58	42	91
20 x 51	36	85
20 x 127	113	162
20 x 190	175	224
27 x 60	41	91
36 x 127	100	148
36 x 190	165	231

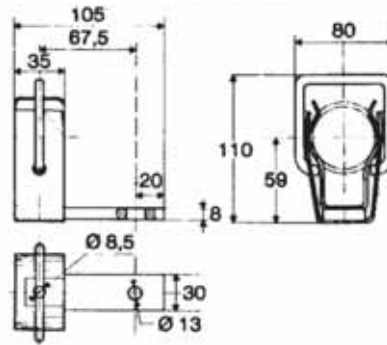
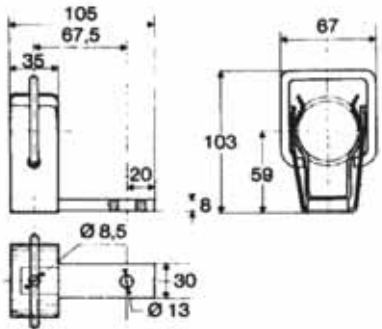


Mounting of two elastic stop pins of 2 mm dia. for fixing clips in position



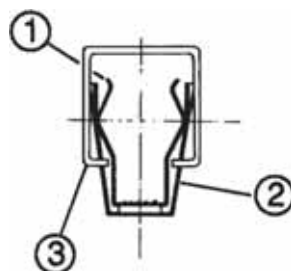
## Medium Voltage Fuses Clips

### Dimensions MR45 - MR55



For fuse diameter	Designation	Reference Number	Catalog Number	Material ensuring the electrical contact (1)	Thermal current I <sub>th</sub> (A)	Weight (g)
45	MR 45	L096472	MR45R	Silver-plated copper	525	450
55	MR55	L078969	MR55R	Silver-plated copper	750	450

Packaging: 1 piece



All the clips are made of an electrical contact (1) and a spring in stainless steel (2).  
The clip MR 45 and MR 55 have also a padlocking system (3) which enables to stop in rotation the heavy fuses.