

# Gears & Fuse Gears



## IEC General Purpose Fuses Ferrule Fuses MSC 8, MSC 10, USM, USCC

For Ferrule-type Fuses  $\varnothing 8$  with or without blown-fuse indicator  
compliance with IEC 60269 -1 & -2

### MSC 8 fuse holder $I_{th}$ max. 25A - $U_n$ 400V

Nb of Poles	Model without blown fuse indicator light		Model with blown fuse indicator light		Nb Mod	Pckg
	Ref. Numbrer	Cat. Number	Ref. Numbrer	Cat. Number		
N	Q218215	MSC810N			1	12
1	T219253	MSC81	F222461	MSC811	1	12
1+N	B211049	MSC81N			2	6
2	R212604	MSC82			2	6
3	W213620	MSC83			3	4
3+N	C214638	MSC83N			4	3
4	Q216168	MSC84			4	3



### MSC 8 fuse holder Phase + Neutral (1 mod.) $I_{th}$ max. 25A - $U_n$ 400V

Nb. of Poles	Model without blown fuse indicator light		Nb Mod	Pckg
	Ref. Numbrer	Cat. Numbrer		
1+N	F200772	MSC81N1M	1	12
3+N	J215150	MSC83N3M	3	4



Assembly accessories	Ref. Numbrer	Cat. Numbrer	Pckg
2-pole pin	G215125	MSCMSDMAASS2	10*
3-pole pin	Q216145	MSCMSDMAASS3	10*
4-pole pin	A217166	MSCMSDMAASS4	10*

\* 10 per bag

# Gears & Fuse Gears

## IEC General Purpose Fuses Ferrule Fuses MSC 8, MSC 10, USM, USCC

For Ferrule-type Fuses Ø 10 with or without blown-fuse indicator or striker

**MSC 10 fuse holder – no accessories**

**I<sub>th</sub> max. 32A - Un 690V**

**compliance with IEC 60269 -1 & -2**



Nb. of Poles	Model without blown fuse indicator light		Model with blown fuse indicator light		Nb Mod	Pckg
	Ref.number	Cat. Number	Ref. Number	Cat. Number		
N	Q218215	MSC810N			1	12
1	Q216674	MSC101	W219784	MSC101I	1	12
1+N	C212085	MSC101N	D232602	MSC101NI	2	6
2	E213122	MSC102	K215151	MSC102I	2	6
3	M215659	MSC103	R226611	MSC103I	3	4
3+N	E217193	MSC103N	E232603	MSC103NI	4	3
4	F218735	MSC104			4	3

**MSC 10 fuse holder Phase + Neutral (1 mod.)**

**I<sub>th</sub> max. 32A - Un 690V**

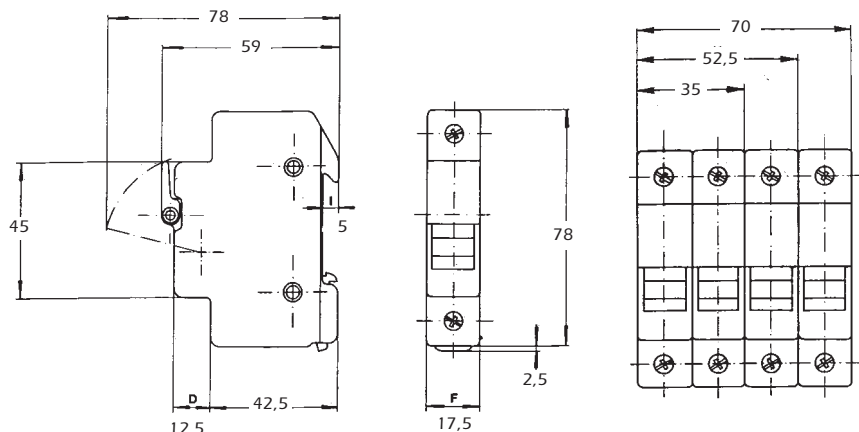


Nb. of Poles	Model without blown fuse indicator light		Model with blown fuse indicator light		Nb Mod	Pckg
	Ref.number	Cat. Number	Ref. Number	Cat. Number		
1+N	Y201317	MSC101N1M	C211050	MSC101N1MI	1	12
3+N	S218217	MSC103N3M	S226612	MSC103N3MI	3	4

Assembly accessories	Ref. Number	Cat. Number	Pckg
2-pole pin	G215125	MSCMSDMAASS2	10*
3-pole pin	Q216145	MSCMSDMAASS3	10*
4-pole pin	A217166	MSCMSDMAASS4	10*

\* 10 per bag

### Dimensions



▪ Direct mounting on symmetrical DIN rail

- Indicator light (120/690V)\*
- Wiring cross sections:
  - single-pole: 1 x 16mm<sup>2</sup>
  - single-pole + neutral: 1 x 10 mm<sup>2</sup>
- Insulated to IP 20 standard

- Single-pole weight
  - 8x31 ; 63 g
  - 8x31 - Ph + N1M ; 63 g
  - 10x38 ; 63 g
  - 10x38 - Ph + N1M ; 68 g

\* With the indicator light a blown fuse can be quickly located if power is still on

# Gears & Fuse Gears



## IEC General Purpose Fuses Ferrule Fuses MSC 8, MSC 10, USCC, USM

For Ferrule-type Fuses ClassCC or Midget  
compliance with UL 512 - UL 480 - CSA 22-2  
**USCC fuse holder**

**I<sup>th</sup> max. 30A - Un 600V**

for CC class fuses



Nb. of Poles	Model without blown fuse indicator light		Model with blown fuse indicator light		Nb Mod	Pckg
	Ref.number	Cat. Number	Ref. Number	Cat. Number		
N	W201131	USN				12
1	B213441	USCC1	X213943	USCC1I	1	12
2	P216489	USCC2	D217008	USCC2I	2	6
3	M217522	USCC3	Y218038	USCC3I	3	4
3+N	G222048	USCC3N	N219593	USCC3IN	4	3
4	O222792	USCC4	E223311	USCC4I	4	3



### USM 10 fuse holders

**I<sup>th</sup> max. 32A - Un 800VAC - 1000VDC**

for 10 x 38 Midget fuses (1-1/2" x 13/32")



Nb. of Poles	Model without blown fuse indicator light		Model with blown fuse indicator light		Nb Mod	Pckg
	Ref.number	Cat. Number	Ref. Number	Cat. Number		
N	W201131	USN				12
1	Y213944	USM1	L214462	USM1I	1	12
2	N217523	USM2	Z218039	USM2I	2	6
3	C218548	USM3	Y219073	USM3I	3	4
3+N	H222049	USM3N	P219594	USM3IN	4	3
4	R222793	USM4	F223312	USM4I	4	3

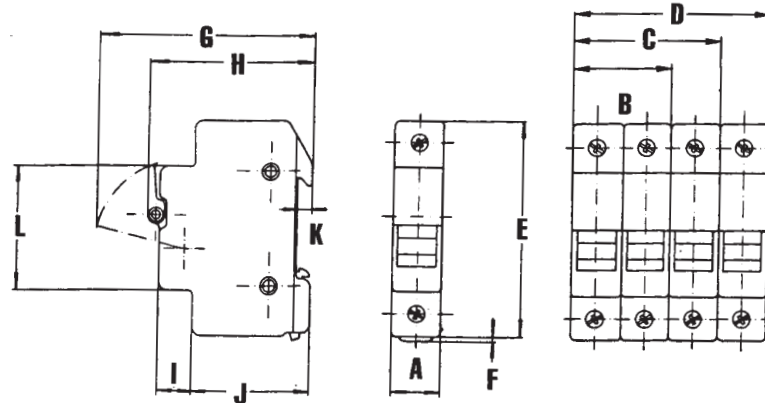


Assembly accessories	Ref. Number	Cat. Number	Pckg
2-pole pin	F201646	USPTH2	10*
3-pole pin	C205047	USPTH3	10*
4-pole pin	P211383	USPTH4	10*

\* 10 per bag

### Dimensions

DIMENSION	mm	In
A	17.5	0.69
B	35.0	1.38
C	52.5	2.07
D	70.0	2.76
E	78.0	3.07
F	2.5	0.10
G	78.0	3.07
H	59.0	2.32
I	12.5	0.49
J	42.5	1.67
K	5.0	0.20
L	45.0	1.77



- Direct mounting on symmetrical DIN rail
- Single-pole weight  
USCC ; 58g  
USM ; 63g

\* With the indicator light a blown fuse can be quickly located if power is still on