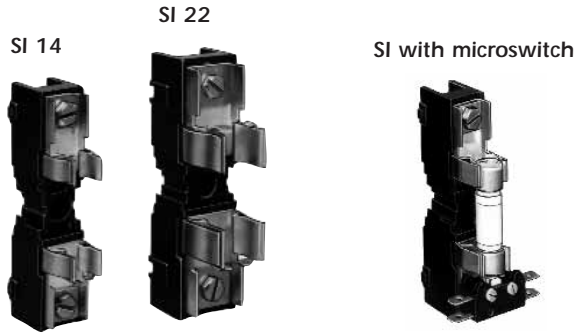




Gears & Fuse Gears

IEC General Purpose Fuses Ferrule Fuses SI Bases for 14x51, 22x58



For Ferrules-type fuses Ø 14 - 22

- SHOCK-PROOF MODULAR ASSEMBLY COMPLIANT WITH IEC 60269-1 AND NF C 63130
- BASE MOUNTING WITH OR WITHOUT MICROSWITCH AND ISOLATING PARTITION
- PHENOLIC RESIN FOR BASIC APPLICATIONS (BASIC MODEL)
- SELF-EXTINGUISHABLE FIBERGLASS POLYESTER FOR TRACTION AND CORROSIVE ATMOSPHERE APPLICATIONS (SALT SPRAY-PROOF MODEL)

Main Characteristics

Model	Thermal current rating (Ith)	Maximum power losses	Rated insulation voltage Ui AC or DC according VDE 0110:565 - group C withstand	Dielectric withstand tests	
				R.M.S. voltage 1mn 50-60 Hz	Voltage shock 1.2/50µs Uimp. : Impulse voltage as per IEC 60947-1
Phenolic resin (standard) SI 14 SI 22	63 A	16 W per phase	750 V	8 kV between phase and mass	between phase and mass
	135 A	26 W per phase			
Salt-spray proof fiber glass polyester SKI 14 SKI 22	63 A	16 W per phase	750 V	3 kV between phases and microswitch	between phases and microswitch
	135 A	26 W per phase			

Tests according to IEC 60060 and 60944 and NF C 64010 Dry atmosphere and new fusegear

Connecting with 16 mm max. width, 5mm max. thick terminal for SI 14 and 22 mm max. for SI 22
* Only for the base. Accessories (partitions and microswitches) are not classified due to their lightness.

Basic model

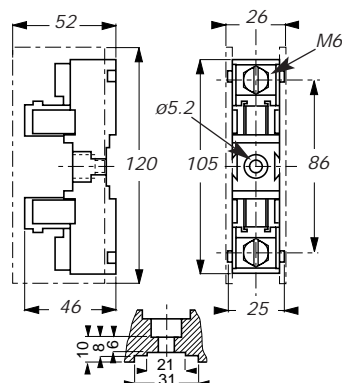
Max. temperature (°C)/Relative Humidity (%): 20 °C/95% - 40°C/80% - 50°C/50%

If Holder must be kept off, a heating system fed during stop periods must be used. Purpose is to keep the temperature of cubicle at a level slightly higher than outdoor.

Salt spray-proof model

Moist tropical and equatorial climate. Corrosive atmosphere.

SI 14 and Partition wall



For direct mounting, screw tightening torque = 0.24 mdaN

Designation	Ref. Number	Catalog Number	Weight (g)
SI 14	V 097124	SI14	85
SKI 14	B 097130	SKI14	100

Pack: 3 pieces

SI: basic model - SK salt spray-proof model

Partition wall

Designation	Ref. Number	Catalog Number	Weight (g)
E 14 - 22	B 097107	E14-22	13

Pack: 2 pieces

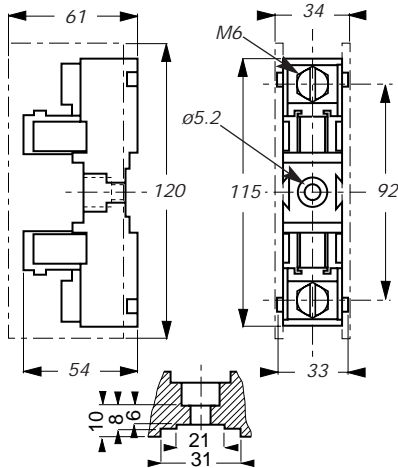
Gears & Fuse Gears



IEC General Purpose Fuses Ferrule Fuses SI Bases for 14x51, 22x58

For Ferrules-type fuses Ø 14 - 22

SI 22 and Partition wall



Designation	Ref. Number	Catalog Number	Weight (g)
SI 22	W097125	SI22	160
SKI 22	C097131	SKI22	190

Pack: 3 pieces
SI: basic model - SK salt spray-proof model

Partition wall

Designation	Ref. Number	Catalog Number	Weight (g)
E 14 - 22	B 097107	E14-22	13

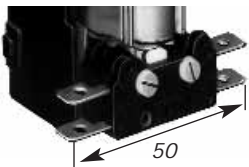
Pack: 2 pieces

Remote sensing microswitch

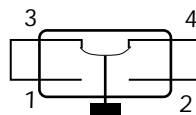
Microswitch type for SI 14	Code	Ref. Number	Catalog Number	Weight (g)
Basic single microswitch	MC 1-5 14 FL 1-5	D 096051	-	20
salt spray-proof single microswitch	MCK 1-5 14 FL 1-5	T 097215	-	20
Basic twin microswitch	MC 1-5 14 FL 1-9	P 096061	-	40

Microswitch type for SI 22	Code	Ref. Number	Catalog Number	Weight (g)
Basic single microswitch	MC 1-5 22 FL 1-5	H096055		24
salt spray-proof single microswitch	MCK 1-5 22 FL 1-5	R097213		22
Basic twin microswitch	MC 1-5 22 FL 1-9	T096065		40

Pack: 1 piece



POSSIBLE ASSEMBLING AFTER CONNECTING ON MODEL WITHOUT PARTITION WALL



- With manual reset reversing style microswitch 10A - 250V ~ @ cos φ = 0.3
- #1 and 3 terminals must always be connected.

Adapters for DIN-rail mounting

Rail style	Designation	Ref. Number	Cat. Number	Top part	Bottom part	Color	Weight (g)	Pkg.
Asymmetrical DIN EN 50035	EF 4	L 097047	EF4	vis M 4		blue	4	100
	EF 35	G 097043	EF35	vis M 3	vis M 5	cream	4	100
	EF 46	K 097046	EF46	vis M 4	vis M 6	white	4	100
Symmetrical DIN EN 50022	Fixoméga FM4	B 092093	MIFIXOMEGAFM4	M 4 center screw		stainless steel	4.4	10