

# X3M

**Energy Data Manager**

# X3M-H

**Energy & Harmonics Data Manager**



- ▶ The **X3M** performance
- ▶ The **X3M** versatility
- ▶ The **X3M** reliability

The X3M is a microprocessor based Energy Data Manager with outstanding flexibility and accuracy designed to meet the most demanding applications of electrical parameters analyses and energy supply monitoring in the industrial environment.

All the readings are "true-RMS" and they are obtained with a continuous sampling of the voltage and current waveforms in order to ensure the maximum metering accuracy of rapidly varying loads (e.g. spot welding) as well as the instrument's suitability for energy quality supervision functions. A patented digital measurement system, an automatic scale change on current inputs and a compensation system of the internal amplifiers' offsets ensure the maximum metering accuracy and stability irrespective of the signal level and the environmental working conditions.

The X3M is equipped with a high capacity flash memory for the storage of data of the load profiles analyses as well for the recording of events related to the quality of the electrical energy supply per EN50160 standards.

The X3M is a revolutionary instrument that may be upgraded after installation for new user needs and to its installation parameters. Two expansion ports make it possible to select the data transmission mode by means of a simple connection of optional modules (RS232, RS485, Analog, I/O) while the instrument architecture is designed to enable the implementation, in the field, at any time, of firmware modifications by means of program up-loads with the purpose of expanding and/or replacing the existing functions with new and different ones.

### Simple to use

A large high-contrast LCD display with white led backlight allows the simultaneous reading of 4 parameters and their symbols with high visibility digits. A bar-graph indicator supplements the reading mode of 3 parameters in analogue format also.

A Led indicator, pulsing with a frequency proportional to the active import power, is also provided on the front panel for field calibration verification by means of external optical devices. 9 keys, with clear indication of their function, make the instrument use simple and intuitive.



### Versatile in application

The X3M is suitable for virtually all type of electrical grid, 3- and 4-wire, symmetrical and asymmetrical, balanced or unbalanced, single- and bi-phase, Low Tension and High Tension, with 1, 2 or 3 CTs as well as for 2 and 4 quadrant (import/export) measurement.

A simple keyboard programming allows the setting of all the operational parameters such as grid type, LV/HT, CT and VT ratios (free setting) integration time (1-60 min), alarms (thresholds, delays, hysteresis), digital outputs and configuration of the optional modules that may be connected.

(1) Mean value (rolling average) over the integration time (1.. 60 min. programmable)  
(2) Energies displayed as 6 digit floating-point readings; internal energy metering performed with 0,1 kWh minimum resolution and 99.999.999,999 kWh maximum energy count before rollover.

### Display Readings

Parameter	Type	L1	L2	L3	Σ	Range
Voltage	V L-N	•	•	•	•	20,0V...400 kV
	V L-L	•	•	•	•	
Current	I-phase	•	•	•	•	10 mA... 10,0 kA
	I-neutral				•	
Power Factor	PF	•	•	•	•	0,00ind...1,00...0,00cap
Frequency	Hz				•	45 ... 65 Hz
Harmonic distort.	THD-V	•	•	•	•	0... 199,9%
	THD-I	•	•	•	•	
Life time	h (1/100 h)				•	0,01...99.999,99 hours
Active power	P	•	•	•	•	± 0,00... 1999 MW
	Pm (°)				•	
	Pmd (°)				•	
Reactive power	Q	•	•	•	•	± 0,00... 1999 Mvar
	Qm-ind (°)				•	
	Qm-cap (°)				•	
	Qmd-ind (°)				•	
	Qmd-cap (°)				•	
Apparent power	S	•	•	•	•	± 0,00... 1999 MVA
	Sm (°)				•	
Active energy	KWh (°)				•	0,1 kWh...99.999,9 MWh
Reactive energy	Kvarh-ind (°)				•	0,1 kvarh...99.999,9 Mvarh
	Kvarh-cap (°)				•	
Apparent energy	KVAh (°)				•	0,1kVAh...99.999,9 MVAh

### X3M with FFT harmonics option or X3M-H

FFT Harmonics	H Voltage	•	•	•	•	Value (H01), % (H02-H31)
	H Current	•	•	•	•	Value (H01), % (H02-H31)
	H Power & dir.	•	•	•	•	Value (H01), % (H02-H31)

### Power quality (EN 50160)

Parameter	L1	L2	L3	Σ	Handling
Sags, swells/dips	•	•	•	•	Event logging to built-in memory with date time stamp
Over-U, Over-I,	•	•	•	•	
Under-U, Mains interruption	•	•	•	•	
Min/Max values	•	•	•	•	

### Alarms

The X3M is equipped with 2 programmable alarms offering the maximum configuration flexibility for adapting to the most diverse requirements.

Each alarm can be selected to link to any one of the parameters available, either as a minimum or as a maximum alarm. Linking of both alarms to the same parameter is also possible for operating as dual threshold alarm.

Special alarms are also available such as min. or max. voltage and max. current applicable to the 3 phases and current unbalance on the 3 phases.

The alarms configuration includes the option of precise setting of a delay time (1-99 sec), an hysteresis cycle (in %) and the activation of the output contacts.

The alarms state information is always available on serial communication as Modbus "coils".

The alarms are entirely programmable by keyboard and via serial port with the Energy Brain software or by means of Modbus *Holding registers*.

### Digital outputs

The X3M is equipped, as standard feature, with two optically isolated transistor outputs rated 27 Vdc 27 mA per DIN 43864 standards.

The two outputs are factory set to the transmission of pulses proportional to the Active energy and the Reactive energy: the pulse number and rate are user programmable.

The outputs may be alternatively configured as outputs of the internal alarms or as remote output devices controlled via serial line and Modbus commands.

### Serial communication

The X3M supports an RS485 or RS232 serial communication by means of optional add-on modules.

The protocol is the MODBUS RTU or ASCII, suitable for communication with PLCs and with SCADA programs. The X3M protocol provides as well "full compliance" with the Modbus and with its default configurations.

The instrument data are read as numerical registers composed by mantissa and exponent in the IEEE format.

A transmission speed of up to 38400 bps., with maximum 124 registers (equivalent to 62 parameters) per query with no waiting time between queries, ensure an unrivalled communication speed and dialogue efficiency.

### Calendar/clock

The X3M is equipped with a real-time calendar clock supporting the time zone (GMT + DST) format and the rules for the automatic switching from Standard Time to Daylight Saving Time and vice versa.



Real time calendar clock with battery buffer (20 years duration)

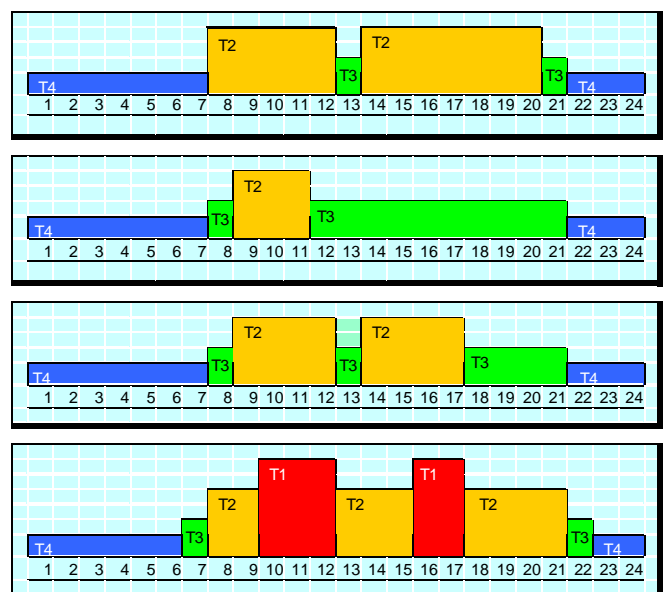
### TOU tariffs

The X3M is designed to handle the most complex TOU systems, with up to 8 different tariffs with a maximum of 12 tariff changes per day.

The readings supplied encompass the energy consumptions (Ea, Er, Es) and the Maximum Demand (Pmd, Qmd, Smd) on the 4 quadrants, total values and distinct values for each of the 8 tariffs for a total of 64 energy counters and 64 Maximum Demand values. In the case of *Import* (2 quadrant) measurement and with a lower number of tariffs, the applicable counters only are updated.

All the readings related to each tariff are available on display and on serial communication.

For proper handling of TOU tariff systems, the X3M requires the up-load of a specific calendar file that may be generated by means of the Energy Brain or edited by the user in binary mode following the specifications.



Example of 4-tariff system

## Data Storage Memory

The X3M is equipped with a 2 MB flash disk memory for the storage of numerous data and events. The large memory capacity supports the storage of up to 60 days' load profiles (with 15 min. samples) or over 50.000 logs as well as other repartition according to the type of events. The memory is structured with the file system and the data is saved as distinct files, organized by type of services.

### POWER QUALITY EVENTS (EN 50160 standards)

The X3M detects and stores, with individual date-time stamp several events giving an accurate monitoring of the power supply quality according to the EN 50160 standards.

- Voltage sags/dips
- Temporary over voltage/swell
- Temporary current peak and direction of flow

*i.e. short duration events* (1 cycle resolution) with registration of date-time, event type, phase involved, duration in number of cycles and min/max parameter value attained during each event. Example:

Date	Time (*)	Event type	Duration (Cycles)	Min/Max Value
20 Dec. 06	16.35.30.67	Voltage Sag V1N	10	21,25
12 Feb. 06	16.35.15.21	Voltage Sag V2N	30	66,32
16 Feb. 06	16.35.32.20	Voltage Swell V3N	25	273,12
16 Feb. 06	16.39.58.87	Import Current Peak I2	5	152,51
16 Feb. 06	16.41.30.91	Import Current Peak I3	7	163,56
16 Feb. 06	16.41.45.07	Import Current Peak I1	3	155,83

- Under voltage/voltage interruption
- Over voltage
- Over current and direction of flow

*i.e. medium and long duration events* with registration of event start-end date/time, event type, phase involved and parameter min/max value attained during each event. Example:

Date	Time(*)	Event type	Min/Max Value
19 Jan. 06	15.59.02.17	Under voltage Start V3N	-
19 Jan. 06	15.59.17.31	Under voltage End V3N	20,48
20 Feb. 06	16.37.46.49	Under voltage start V1N	-
20 Feb. 06	16.41.45.88	Under voltage End V1N	60,34
01 Mar. 06	16.08.19.27	Over voltage Start V2N	-
01 Mar. 06	16.08.19.99	Over voltage End V2N	264,35
01 Mar. 06	16.02.29.23	Import over current Start I1	-
01 Mar. 06	16.08.19.72	Import over current End I1	213,74

Discrimination of the event type is programmable for each parameter in terms of duration (no. of cycles, trigger-on value and trigger-off value).

Instrument power supply interruptions are also logged in order to provide a complete picture of the activities.

16 Jan. 06	16.34.49.88	Power OFF
16 Jan. 06	16.35.03.50	Power ON
16 Jan. 06	16.35.04.10	Events Detection Enable

### MIN. AND MAX. VALUE LOGS

The X3M records the absolute minimum and/or maximum instantaneous value (RMS over 1 sec) attained by the most significant parameters and logs the event in memory with date and time stamp.

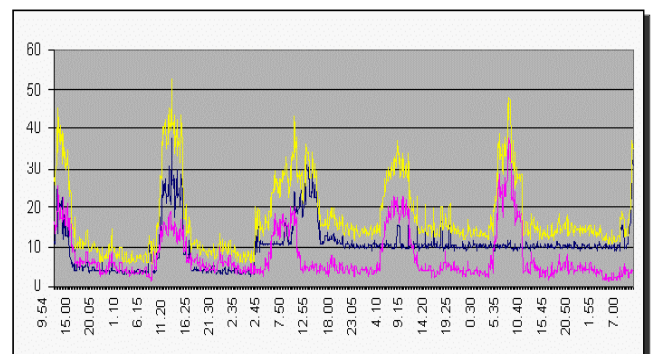
- Voltage ..... minimum and maximum value per phase
- Current .....maximum value per phase
- Active power .....maximum value per phase
- Apparent power .....maximum value per phase
- Power factor .....minimum value per phase

(\*) all time stamps in hours, minutes, seconds and seconds/100.

### LOAD PROFILES AND CONSUMPTION DATA

The X3M systematically stores the consumption and demand data into *day files* containing all the necessary information for drawing accurate load profiles and also for comprehensive consumption analyses over long periods.

- Daily load profiles on the 4 quadrants with sampling according to the integration period. Up to 60 days' data default capacity with 15 min. samples.
- Max. Demand on the 4 quadrants and for each tariff, where programmed.
- Energy consumption on the 4 quadrants and for each tariff, where programmed.



### HARMONICS SURVEYS (with FFT option only)

Harmonic Surveys can be made when the FFT upgrade is installed on the instruments. A date/time stamped sample of 42 default readings is automatically saved to the instruments' built-in memory on a circular buffer (FIFO) covering a 10-day survey period with samples taken every 2 minutes and data organised in daily files.

### FUNCTIONAL LOGS

The memory is also used for several additional operations such as:

- Functional logs tracking all the operations that introduce a settings change of the instrument since initial install.
- TOU calendar files for the handling of TOU tariffs and other memory configuration files.
- Specific files for special programming and/or for future implementation of new functions by means of up-loads.

*As a consequence of the large amount and complexity of the data collected in the memory, the configuration of the various memory services and the data downloads are exploited via serial port. The Energy Brain software represents an easy all-users tool. The use of the "read general file" and "write general file" Modbus commands is otherwise available.*

*System integrators and expert users are given the additional possibility of developing and configuring new customised data handling services thanks to the great flexibility of the memory architecture and of the data storage organisation. Specialised technical literature is available separately.*

**Open architecture**

The X3M is a revolutionary instrument in its kind, because it may be easily adapted to follow the user needs at any time after its installation. The instrument architecture is designed for field implementation of hardware and firmware expansions for the support of new functions. The benefit for the user is the possibility of spreading the initial investment and, most of all, the confidence of an instrument that will allow, at any time, new and unanticipated technical requirement.



**HARDWARE EXPANSIONS (optional modules)**

The X3M is fitted with 2 expansion sockets for the connection of external expansion modules supporting specific communication functions (serial, analogue, digital). Connection of the optional modules to the instrument is simply made by attached cable with RJ45 plug. The optional modules are self-supplied and the applicable programming menu is automatically enabled by the instrument upon connection of the option(s).

**FIRMWARE EXPANSIONS (options/uploads)**

The instrument architecture is designed to deal with modification of the instrument operative firmware for the purpose of integrating the existing characteristics with new and different functions (example, harmonics analyses, special applications, special data storage configurations, etc.) The functions enhancement may be carried out by means of simple key code entries (for functions that are already embedded), with file up-downloads via the Energy Brain software (for networked instruments) or with special upgrade programs supplied by Electrex where required.

**HARDWARE EXPANSIONS (optional modules)**

**- RS485option**

Opto isolated RS485 port with 2400 bps to 38400 bps. programmable speed. It supports instrument networking with other units up to a distance of 1000 meters and up to max 128 meters connected on the same communication pair with no need of additional line amplifiers.



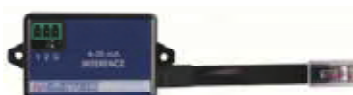
**- RS232 option**

Opto isolated RS232 port with 2400 bps to 38400 bps programmable speed. 9-pole (D-sub9) connector.



**- 2 x 4-20 mA option**

2 galvanically isolated analogue outputs; 4-20 mA or 0-20 mA transmission. Extremely high accuracy and signal stability thanks to a 10 bit digital to analogue conversion that maintains the accuracy of the original parameter. It ensures a response time of max. 50 ms. with max. 200 ms. update interval. Each of the two outputs may be linked to any one of the parameters available with the additional possibility of setting the zero output (4 or 0 mA) and/or the 20 mA output to match any desired positive or negative measurement value.



**- Digital I/O option**

Module for the acquisition of the ON-OFF state of external contacts (example: MCBs, switches, auxiliary contacts, etc.). It features 2 opto isolated inputs and 2 relay outputs with changeover contacts rated 30V 2A (resistive load) that may be used as remote output devices or as additional output contacts for the internal alarms. The inputs and outputs state is handled exclusively via serial port and Modbus commands and no user setting is available on display.



Technical specification
- Add-on modules
- Compact and lightweight
- Fixing to instrument rear panel
- No power supply required
- Connection:
Input: plug-in cable + connector
Output(s): plug-in terminal board
9-pole (D-sub9) for RS232
- Weight: max. 45 gr.
- Size: 60 x 40 x 20 mm.
- Suiting other Electrex panel meters

## FFT HARMONICS ANALYSES (option)

The X3M instruments feature the option of expanding their measurement capability by adding on new parameters to the existing ones. The FFT harmonics option adds all the parameters necessary for a comprehensive Harmonics analyses. It supports a 32 bit calculation which gives superior metering accuracy and to classify these instruments as genuine Energy & Harmonics analysers with a performance comparable with many sophisticated and expensive analysers.

### General features

The FFT harmonics option supports all the readings that are needed for a superior analyses of the problems related to harmonics. Readings give both the harmonics power and the direction providing an invaluable tool for immediate examination of the harmonics flow inside one's own plant and for identifying potentially undesirable imported problems.

The FFT harmonics option can be implemented on X3M at any time, after instrument installation and requires no tools nor accessories. It is simply performed by the entry, via front keyboard, of a unique PUK code that may be ordered for the serial number of the instrument to be upgraded..

The FFT harmonics option may also be supplied in the meter by ordering the instrument type X3M-H with the option.

### Harmonics surveys

With the X3M instruments, Harmonic Surveys can be made when the FFT upgrade is installed.

A date/time stamped sample of 42 default readings is automatically saved to the instruments' built-in memory on a circular buffer (FIFO) covering a 10-day survey period with samples taken every 2 minutes. Each sample covers:

- Voltage: **U, THD-U, H1-U, H3-U, H5-U, H7-U** and **H9-U** per phase
- Current: **I, THD-I, H1-I, H3-I, H5-I, H7-I** and **H9-I** per phase

The survey data is retrieved via serial line as daily files in the HTML, XLS or TXT formats (line commands required).

### Modbus communication

A total of 384 readings related to harmonics are enabled as Modbus registers on serial port by the FFT harmonics option.

- Current and voltage harmonics per order and per phase
- Phase angle in degrees (range -180,0÷180,0°) per harmonic order, per phase, referred to  $U_{L1}$  fundamental.

These parameters may be used for external reconstruction of vectorial graphs such as those supported by the Energy Brain software (v.4.0.0)

### Technical specification

Harmonics range..... Odd and Even harmonics up to 31<sup>st</sup> order  
Parameters....  $H_U, H_I, H_P$  & sign (direction) per order, per phase  
Parameters up date interval ..... approx. 1 s  
Readings indication:

H01 .. floating pnt. values with automatic unit/K/M exponent  
H02-31... values in % of fund. (3½ digit, range 0,0÷100,0%)  
H direction ..... (+) or (-) sign on power

Modbus readings:

Voltage, current, phase angle per harmonic order, per phase  
Accuracy:

$H_U$  &  $H_I$  ...±(0,1%rdg.+1LSD) for H01 to max. ±2,0% for H31

$H_P$  .....±(0,2%rdg.+2LSD) for H01 to max. ±2,0% for H31

Phase angles .... ±0,1deg. for H01 to max ±3,0deg. for H31

Sampling frequency..... 64 x f (mains frequency)

FFT size ..... 64 points

FFT calculation accuracy..... 32 bits

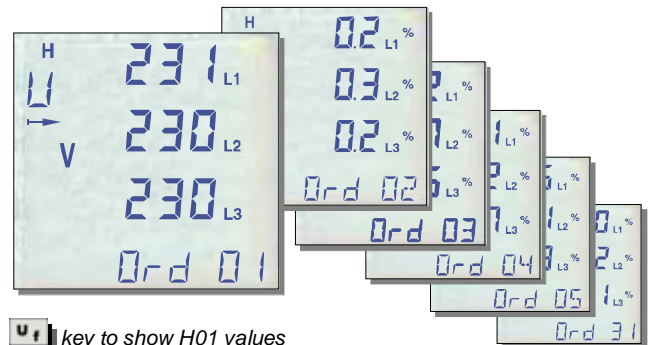
Window.....rectangular


Minimum reading..... 1%

### Harmonics readings

#### Voltages Harmonics

- H01: value in V per phase
- H02...31: value in % of the fundamental per phase

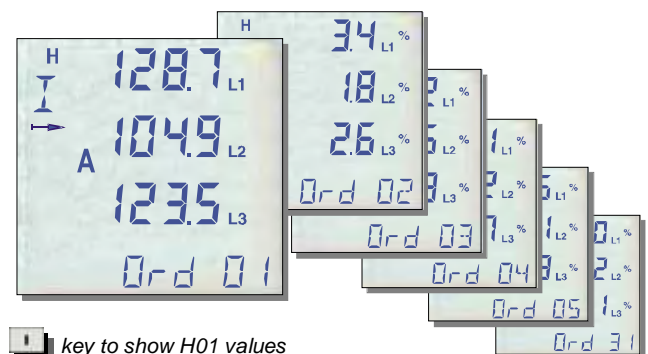



 key to show H01 values

 keys to scroll H02...H31 values

#### Currents Harmonics

- H01: value in A per phase
- H02...31: value in % of the fundamental per phase

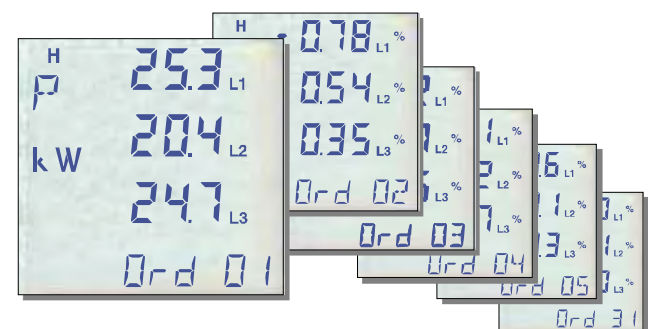


 key to show H01 values


 keys to scroll H02...H31 values

#### Harmonics Powers/Direction

- H01: value in W per phase
- H02...31: value in % of the fundamental per phase
- + or - sign indicating the harmonics origin downstream (load) or upstream (source) the measurement point.



 key to show H01 values

 keys to scroll H02...H31 values

**ENERGY BRAIN software**

The Energy Brain is the software package designed for the realization of all types of local and/or wide area networks of instruments.

It is suitable for application with all the Electrex instruments equipped with communication port and it supplies all the functions needed for an accurate monitoring and targeting of industrial energy consumption.



**MAIN FUNCTIONS**

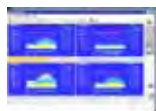
**Configuration**

The available choices give maximum flexibility in adapting the software to the type of network (several types of simultaneously connected networks too) and to the operator needs.

- Field instruments set up (CT, PT, alarms, etc.)
- Network configuration (instrument, customer, groups, locations, etc) with individual setting of the communication mode (local by RS232/RS485 or remote by Modem, GSM, Ethernet) and communication parameters (speed, etc.)
- Scheduling of the data collection and download agenda (unique for location and customer) with daily, weekly or monthly intervals

**Load and energy profiles/graphs**

- Demand profiles (day, month and year)
- Energy profiles (day, month and year)
- Time-of-use Demand and Energy profiles
- MD profiles (per month, year and per tariff)
- Up to 4 graphs displayed simultaneously
- Zoom and parameter selection tools
- Graphical and numerical print-out



**On line readings display**

- On line display of the readings supplied by the field instruments.



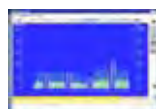
**Data collection and storage**

- Automatic or manual download of power and energy data from the field instrument with automatic saving into the internal data base (Access® or MySQL®).
- Data export to other DBs by means of built-in ODBC or in txt format.



**Time-of-use tariffs**

- Handling of time of use tariffs
- Built in editor for TOU tariff & Calendar set up.



**Virtual channels**

- Creation of virtual channels (e.g. "summation" of departments, channel "combinations", etc.). Data display and treatment likewise a physical channel.
- Merging of variables and complex mathematical formulas particularly useful, example, for carrying out simulations.



**SPECIFIC FUNCTIONS FOR X3M INSTRUMENTS**

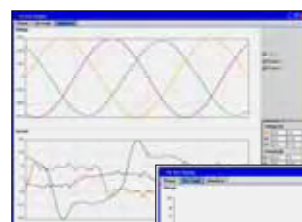
- Download, storage to HD and display of the events and logs collected by the X3M instruments (all types).
- Set up of events discriminating factors in terms of duration (no. of cycles, trigger-on value and trigger-off value).



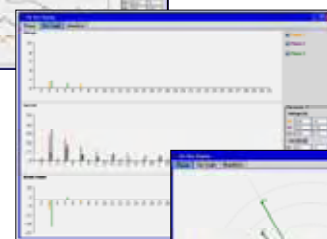
Description	Value
Voltage Dropping & Undervoltage Threshold [%]	25
Voltage Dropping & Undervoltage Restore Threshold [%]	45
Voltage Dropping Max Duration [Cycles]	75
Voltage Swell & Overvoltage Threshold [%]	240
Voltage Swell & Overvoltage Restore Threshold [%]	250
Voltage Swell Max Duration [Cycles]	75
Current Peak & Overcurrent Threshold [A/100]	2500
Current Peak & Overcurrent Restore Threshold [A/100]	2000
Current Peak Max Duration [Cycles]	75

**On-line graphs**

- Graphs supported for instruments type X3M equipped with FFT harmonics option or for X3M-H. Available only with on-line connected Instrument(s).

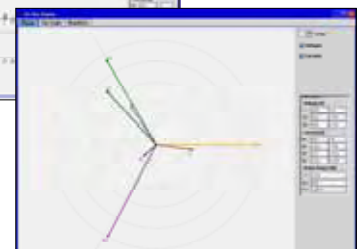


Waveforms



Harmonics bargraphs

Vectorial diagrams



Several Energy Brain software versions are available to meet user requirements and number of channels required. Information available separately.

## Technical specification

### Readings

Voltage .....  $U_{1-N}, U_{2-N}, U_{3-N}, U_{1-2}, U_{2-3}, U_{3-1}, U_{LL\Sigma}, U_{LN\Sigma}$   
 Current .....  $I_1, I_2, I_3, I_{\Sigma}, I_{neutral}$   
 Power factor .....  $PF_1, PF_2, PF_3, PF_{\Sigma}$   
 Frequency .....  $f$   
 Life time ..... Hours, hours/100  
 Voltage THD .....  $THD-U_1, THD-U_2, THD-U_3, THD-U_{\Sigma}$   
 Current THD .....  $THD-I_1, THD-I_2, THD-I_3, THD-I_{\Sigma}$   
 Instantaneous powers .....  $P_1, P_2, P_3, P_{\Sigma} - Q_1, Q_2, Q_3, Q_{\Sigma} - S_1, S_2, S_3, S_{\Sigma}$   
 Average powers .....  $Pm\Sigma, Qm\Sigma(ind), Qm\Sigma(cap), Sm\Sigma (imp/exp)$   
 Max. powers (MD) .....  $Pmd\Sigma, Qmd\Sigma(ind), Qmd\Sigma(cap), Smd\Sigma (imp/exp)$   
 Active Energy .....  $E_a (import/export)$   
 Reactive energy .....  $E_r (ind), E_r (cap) (import/export)$   
 Apparent energy .....  $E_s (import/export)$   
 Harmonics (FFT) (\*) ... only for X3M with FFT harm. option or X3M-H  
 (\*) .....  $H_{U1}, H_{U2}, H_{U3} (1-31^{st} \text{ order})$   
 (\*) .....  $H_{I1}, H_{I2}, H_{I3} (1-31^{st} \text{ order})$   
 (\*) Harmonics power & direction (1-31<sup>st</sup> order)  
 Power quality (events logging to built-in memory)  
 Voltage sags/dips  
 Temporary over-voltage/swell  
 Temporary current peak and direction of flow  
 Undervoltage/voltage interruption  
 Over-voltage  
 Over current and direction of flow  
 Functional and operational logs

### Electrical characteristics

Connection ..... 3-phase, single- & bi-phase, LT and HT grids  
 balanced, unbalanced, 3- and 4-wire  
 Voltage inputs Direct ..... from 20 to 500V phase-phase  
 (max. 1,7 crest factor)  
 Via external VTs with max. 400 kV primary rating  
 programmable VT values  
 Overload ..... max, 900 Vrms peak for 1 sec.  
 Current inputs ..... via 1, 2 or 3 external CTs  
 max. 10kA primary; .../1A and .../5A secondary  
 programmable CT values  
 Overload ..... max. 100Arms peak for 1 sec.  
 Input burden .....  $< 0,5 \text{ VA}$   
 Power supply .....  $85\div 265 \text{ Vac}/100\div 374 \text{ Vdc}$  or  $24\text{Vac}/18-60 \text{ Vdc}$   
 (separate from the measurement inputs)  
 Self consumption ..... 5 VA

### Front panel

Display ..... LCD, STN type, 256 segment  
 Display size ..... 63 x 65 mm.  
 Backlighting ..... white led  
 Keyboard ..... 9 keys with explicit function recall  
 Calibration Led Available on front panel

### How to order

Type	P.N.
X3M .... (85÷265Vac/100÷374Vdc power supply) ....	PFE 411-00
X3M-24..... (24Vac 18-60 Vdc power supply) ....	PFE 411-04
X3M-H ... (as above with FFT Harmonics option) ....	PFE 418-00
X3M-H24. (as above with FFT Harmonics option).....	PFE 418-04
RS 485 option .....	PFE 420-00
RS 232 option .....	PFE 421-00
Dual 4-20mA option.....	PFE 422-00
I/O option .....	(pending)
FFT Harmonics option (1).....	PFSW 399-00

(1) The S.No. of the instrument to upgrade must be indicated when ordering

### Functional characteristics

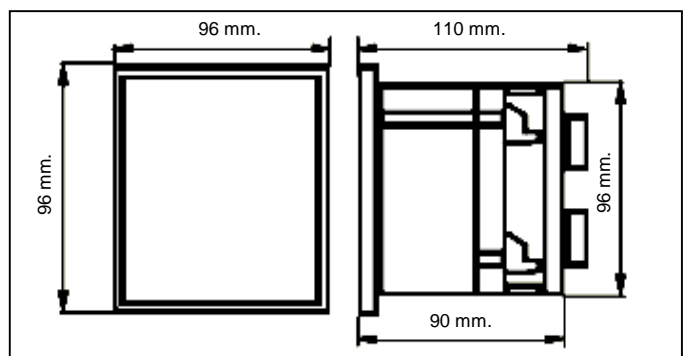
Measurement ..... True-RMS up to the 31<sup>st</sup> harmonic  
 Quadrants ..... 2 and 4 quadrant measurement (programmable)  
 Accuracy ..... Class 1 on energy complying with IEC EN 61036.  
 Sampling ..... Continuous sampling of current and voltage waveforms  
 Compensation ... Automatic compensation of the amplifiers offsets  
 Scale change ... Automatic scale change on current inputs (2 scales)  
 Isolation ..... Galvanic isolation on all inputs and outputs  
 Standards  
 - Safety: ..... IEC EN 61010 class 2  
 - E.M.C.: ..... IEC EN 61326-1A  
 - Accuracy: ..... EC EN 61036  
 Outputs:  
 2 digital outputs rated 27Vdc-27mA (DIN43864)  
 with programmable functionality (pulse output or alarm)  
 Options .. 2 ports for the connection of external expansion modules  
 - RS485 communication port  
 - RS232 communication port  
 - Dual analogue output 4-20 mA  
 - Digital I/O

### Data memory

2 MB flash disc with 20 years data retention  
 Data organised in record files with date-time stamping of creation and of last modification.  
 Access to the disc by means of the Modbus "Write General File" and "Read General File" commands.  
 Real time calendar clock with battery buffer (20 years duration).

### Mechanical and environmental

Working temperature range.....  $-20/+60 \text{ }^{\circ}\text{C}$   
 Humidity ..... 90% R.H. non condensing  
 Enclosure ..... Self-extinguishing plastic material class V0  
 Protection degree ..... IP51 on front panel  
 Size ..... 96 x 96 x 90 mm. (110 mm. with options)  
 Mount ..... flush mount  
 Panel cut ..... 92 x 92 mm  
 Terminals ..... plug-in type with screw protection  
 suitable for cables up to 4 mm<sup>2</sup>.  
 Weight ..... approx. 410 gr. net



X3M and X3M-H are also available in DIN rail format. Please refer to X3M-D and X3M-DH data sheet.





MAJESTIC GLOBAL LTD. [www.mgl.hk](http://www.mgl.hk)  
Unit 1207-8 Grandtech Centre, 8 On Ping Street, Shatin, Hong Kong  
Tel: +852 2307 8933 Fax: +852 2307 8950 Email: [info@mgl.com.hk](mailto:info@mgl.com.hk)



X3M / X3M-H 2006-03  
Subject to modification without prior notice